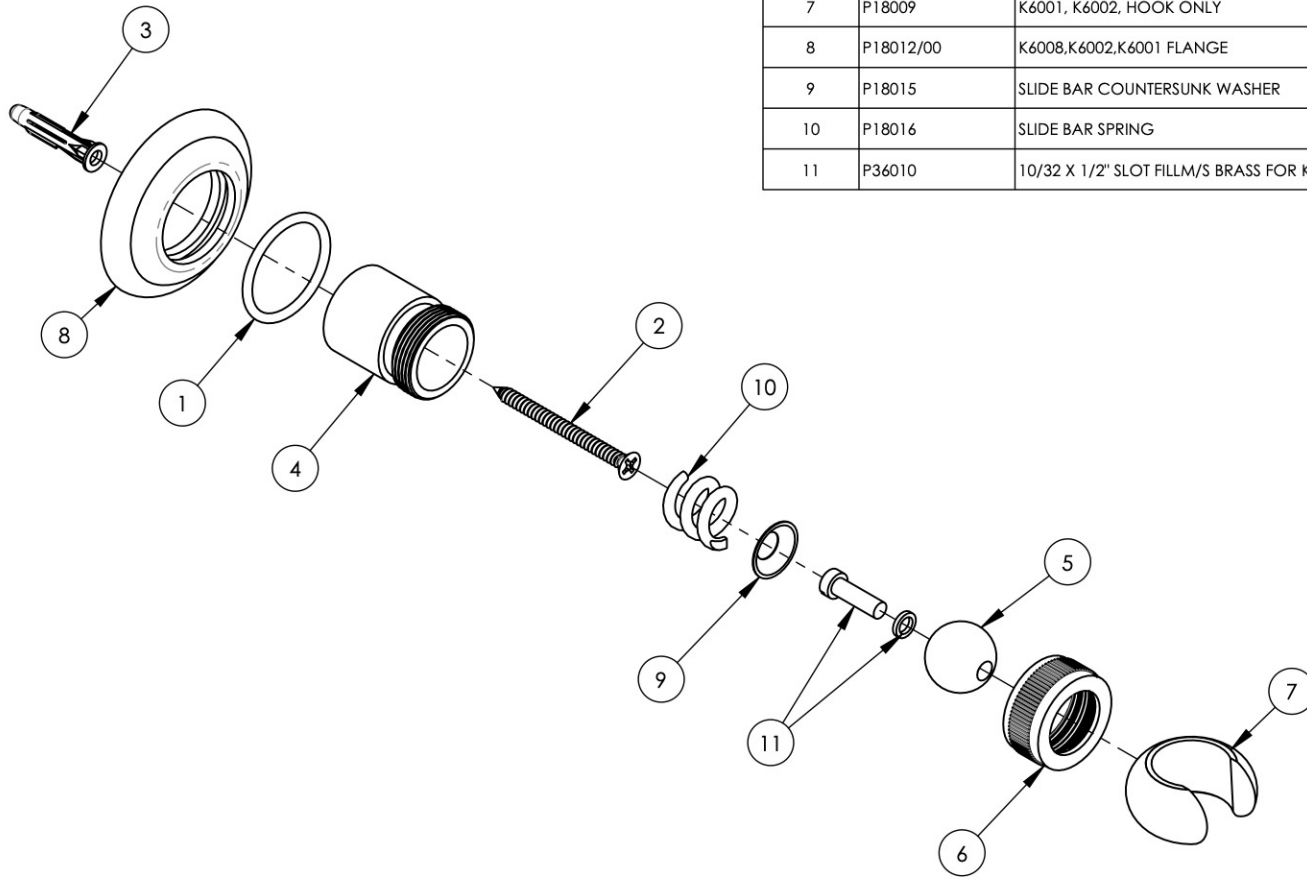


- NOTE(S):  
 1. PART NUMBER, "/00" DENOTES PART SHALL HAVE FINISH.  
 2. APPLY NSF COMPLIANT GREASE TO ANY O-RING, SEALING JOINTS, AND/OR PIVOTAL POINTS.  
 3. APPLY NSF COMPLIANT LOCTITE TO THREADED AREA.  
 4. APPLY NSF COMPLIANT REMOVABLE (BLUE) LOCTITE TO THREADED AREA.  
 5. SILVER SOLDER JOINTS SHALL BE FULLY WETTED VIA CAPILLARY ACTION AND COMPLETELY NON-POROUS.



| ITEM NO. | PART NUMBER | DESCRIPTION                                       | QTY. |
|----------|-------------|---|------|
| 1        | 90121       | O-RING, 1-1/16"ID X 3/32"THK, AS-568-121          | 1    |
| 2        | 92234       | SCREW FOR WOOD, PHIL. NO. 8 X 1-1/2"L             | 1    |
| 3        | 92235       | ANCHOR FOR DRYWALL, TWIST-ACTION NO. 6-8 SIZE     | 1    |
| 4        | P18005/00   | K6001 BODY  | 1    |
| 5        | P18007      | K6001, K6002 BALL JOINT                           | 1    |
| 6        | P18008/00   | COLLAR NUT, K6001 K6002                           | 1    |
| 7        | P18009      | K6001, K6002, HOOK ONLY                           | 1    |
| 8        | P18012/00   | K6008, K6002, K6001 FLANGE                        | 1    |
| 9        | P18015      | SLIDE BAR COUNTERSUNK WASHER                      | 1    |
| 10       | P18016      | SLIDE BAR SPRING                                  | 1    |
| 11       | P36010      | 10/32 X 1/2" SLOT FILLM/S BRASS FOR K6001 & K6002 | 1    |



| ZONE      | REV. | DESCRIPTION | DATE | APPROVED |
|-----------|------|-------------|------|----------|
| REVISIONS |      |             |      |          |

1261 LOGAN AVENUE  
 COSTA MESA, CALIFORNIA 92626  
 PHONE: 714.361.4800  
 FAX: 714.617.3120

**PHYL RICH**<sup>®</sup>  
 Defining Luxury Since 1959

**PROPRIETARY AND CONFIDENTIAL**  
 THE INFORMATION CONTAINED IN THIS DRAWING IS THE SOLE PROPERTY OF PHYL RICH. ANY REPRODUCTION IN PART OR AS A WHOLE WITHOUT THE WRITTEN PERMISSION OF PHYL RICH IS PROHIBITED.  
**DO NOT SCALE DRAWING**

**HAND HELD SHOWER WALL BRACKET**

|                  |                         |              |
|------------------|-------------------------|--------------|
| SIZE<br><b>A</b> | ASM/PRT NO.<br>K6001/00 | REV          |
| SCALE: 1:2       | WEIGHT: lbs.            | SHEET 1 OF 2 |