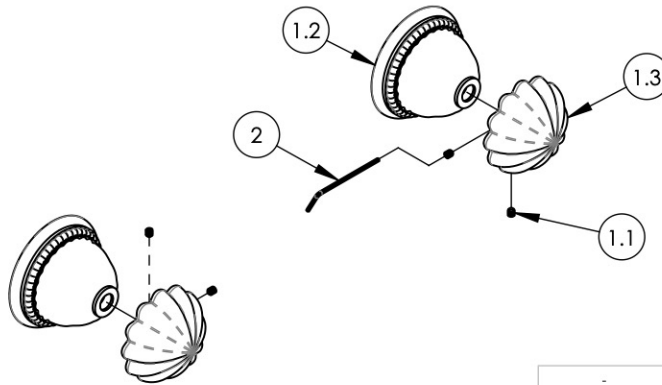
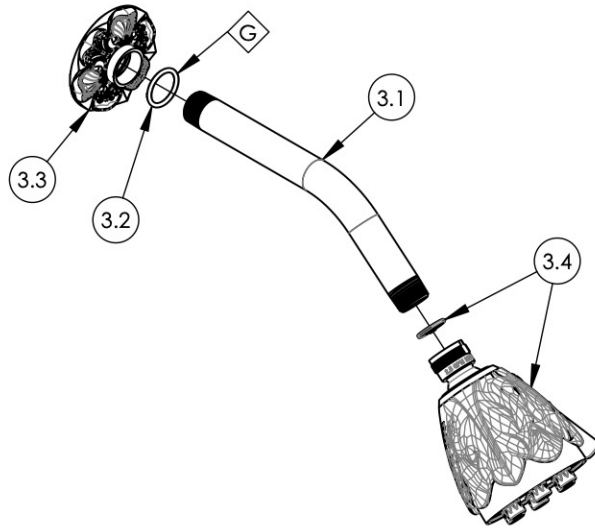


- NOTE(S):
- PART NUMBER, "/00" DENOTES PART SHALL HAVE FINISH.
 - APPLY NSF COMPLIANT GREASE TO ANY O-RING, SEALING JOINTS, AND/OR PIVOTAL POINTS.
 - APPLY NSF COMPLIANT LOCTITE TO THREADED AREA.
 - APPLY NSF COMPLIANT REMOVABLE (BLUE) LOCTITE TO THREADED AREA.
 - SILVER SOLDER JOINTS SHALL BE FULLY WETTED VIA CAPILLARY ACTION AND COMPLETELY NON-POROUS.



ITEM NO.	PART NUMBER	DESCRIPTION	QTY.
1	3-226/00	ROUND HANDLE, GEORGIAN & BARCELONA	2
1.1	92008	SET SCREW, CUP POINT 8-32, 3/16" L.	2
1.2	P02013/00	K141 COVER PLATE	1
1.3	P01015/00	K110 HANDLE	1
2	92021	HEX KEY 5/64, FOR 8-32 SET SCREW	1
3	K807/00	SHOWER HEAD, EMPIRE	1
3.1	P16008/00	SHOWER ARM (8 INCH)	1
3.2	90117	O-RING, 7/8"ID X 33/32"THK., AS-568-117	1
3.3	P16003/00	K804 FLANGE	1
3.4	3-579/00	ASSY, SHOWER JET, OVERLAY, EMPIRE	1

ZONE	REV.	DESCRIPTION	DATE	APPROVED
REVISIONS				

1261 LOGAN AVENUE
COSTA MESA, CALIFORNIA 92626
PHONE: 714.361.4800
FAX: 714.617.3120

PHYLIRICH[®]
Defining Luxury Since 1959

PROPRIETARY AND CONFIDENTIAL
THE INFORMATION CONTAINED IN THIS DRAWING IS THE SOLE PROPERTY OF PHYLIRICH. ANY REPRODUCTION IN PART OR AS A WHOLE WITHOUT THE WRITTEN PERMISSION OF PHYLIRICH IS PROHIBITED.

-	-	INTERPRET GEOMETRIC DIMENSIONING & TOLERANCING IN ACCORDANCE WITH ASME Y14.5-2009 & ASME Y14.41-2003 STANDARDS, UNLESS OTHERWISE SPECIFIED. DIMENSIONS ARE IN INCHES. TOLERANCES ARE:		
NEXT ASSY	USED ON	FRACTIONS ±1/16"	DECIMALS X.X: ±.1 X.XX: ±.01 X.XXX: ±.005	ANGULAR ±2°
APPLICATION		NAME	DATE	
MATERIAL		DRAWN	AMM	12/21/2020
FINISH		CHECKED	AMM	12/21/2020
DO NOT SCALE DRAWING				

TWO HANDLE SHOWER SET, ROUND, GEORGIAN & BARCELONA

SIZE	ASM/PRT NO.	REV
A	K3361/00	
SCALE: 1:4.5	WEIGHT: lbs.	SHEET 1 OF 2