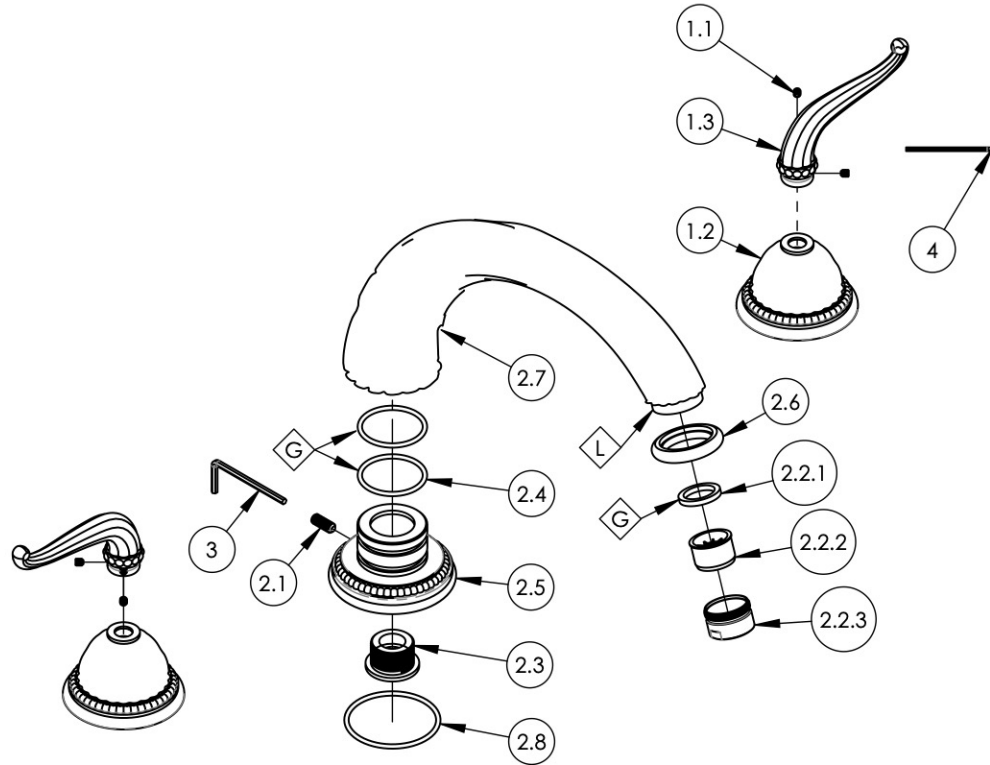


- NOTE(S):
 1. PART NUMBER, "/00" DENOTES PART SHALL HAVE FINISH.
 2. APPLY NSF COMPLIANT GREASE TO ANY O-RING, SEALING JOINTS, AND/OR PIVOTAL POINTS.
 3. APPLY NSF COMPLIANT LOCTITE TO THREADED AREA.



| ITEM NO. | PART NUMBER | DESCRIPTION | QTY. |
|----------|-------------|--|------|
| 1 | 3-225/00 | LEVER HANDLE, GEORGIAN & BARCELONA | 2 |
| 1.1 | 92008 | SET SCREW, CUP POINT 8-32, 3/16" L. | 2 |
| 1.2 | P02013/00 | K141 COVER PLATE | 1 |
| 1.3 | 2-151/00 | SUB ASSY. HANDLE, K141 | 1 |
| 2 | 3-228/00 | DECK TUB SPOUT, P27012 RIBBED, GEORGIAN & BARCELONA SERIES | 1 |
| 2.1 | 92262 | SET SCREW, CUP PT 1/4"-20 X 5/8"L | 1 |
| 2.2 | 3-610/00 | AERATOR & HOUSING, M28X1, TUB FILLER, FULL FLOW | 1 |
| 2.2.1 | 10584 | RUBBER SEAL, AERATOR GASKET 1.0"OD X .753"ID X .125"THK | 1 |
| 2.2.2 | 10582 | AERATOR, NEOSTRAHL. M28, TUB FILLER, FULL FLOW | 1 |
| 2.2.3 | 10583/00 | AERATOR HOUSING, M28 41.2007.000 | 1 |
| 2.3 | P27012_5 | K5141 DECK SPOUT BASE CONNECTOR | 1 |
| 2.4 | 90127 | O-RING, 1-7/16"ID X 1-5/8"OD X 3/32"THK, AS-568-127 | 2 |
| 2.5 | 10500/00 | K5141 DECK SPOUT BASE | 1 |
| 2.6 | P27014/00 | AERATOR RING | 1 |
| 2.7 | P27012_1/00 | K5141 DECK SPOUT | 1 |
| 2.8 | 90137 | O-RING, 2-1/16"ID X 3/32"THK., AS-568-137 | 1 |
| 3 | 92216 | HEX L-KEY 1/8" HEX x 2-5/16"L | 1 |
| 4 | P39001 | HEX KEY 5/64, FOR 8-32 SET SCREW | 1 |

| ZONE | REV. | DESCRIPTION | DATE | APPROVED |
|-----------|------|-------------|------|----------|
| REVISIONS | | | | |

1261 LOGAN AVENUE
 COSTA MESA, CALIFORNIA 92626
 PHONE: 714.361.4800
 FAX: 714.617.3120

PHYLIRICH[®]
 Defining Luxury Since 1959

PROPRIETARY AND CONFIDENTIAL
 THE INFORMATION CONTAINED IN THIS DRAWING IS THE SOLE PROPERTY OF PHYLIRICH. ANY REPRODUCTION IN PART OR AS A WHOLE WITHOUT THE WRITTEN PERMISSION OF PHYLIRICH IS PROHIBITED.

| NEXT ASSY | | USED ON | | INTERPRET GEOMETRIC DIMENSIONING & TOLERANCING IN ACCORDANCE WITH ASME Y14.5-2009 & ASME Y14.41-2003 STANDARDS. UNLESS OTHERWISE SPECIFIED, DIMENSIONS ARE IN INCHES. TOLERANCES ARE: | | |
|-----------------------------|--|---------------------|--|---|------|------|
| MATERIAL | | FRACTIONS ±1/16" | DECIMALS X.X: ±.1 X.XX: ±.01 X.XXX: ±.005 | ANGULAR ±2° | NAME | DATE |
| FINISH | | DRAWN | AMM | 7/14/2020 | | |
| DO NOT SCALE DRAWING | | CHECKED | AMM | 7/14/2020 | | |

**DECK TUB SET, LEVER HANDLES,
 GEORGIAN & BARCELONA**

| SIZE | ASM/PRT NO. | REV |
|--------------|--------------|--------------|
| A | K1141P/00 | |
| SCALE: 1:4.5 | WEIGHT: lbs. | SHEET 1 OF 2 |