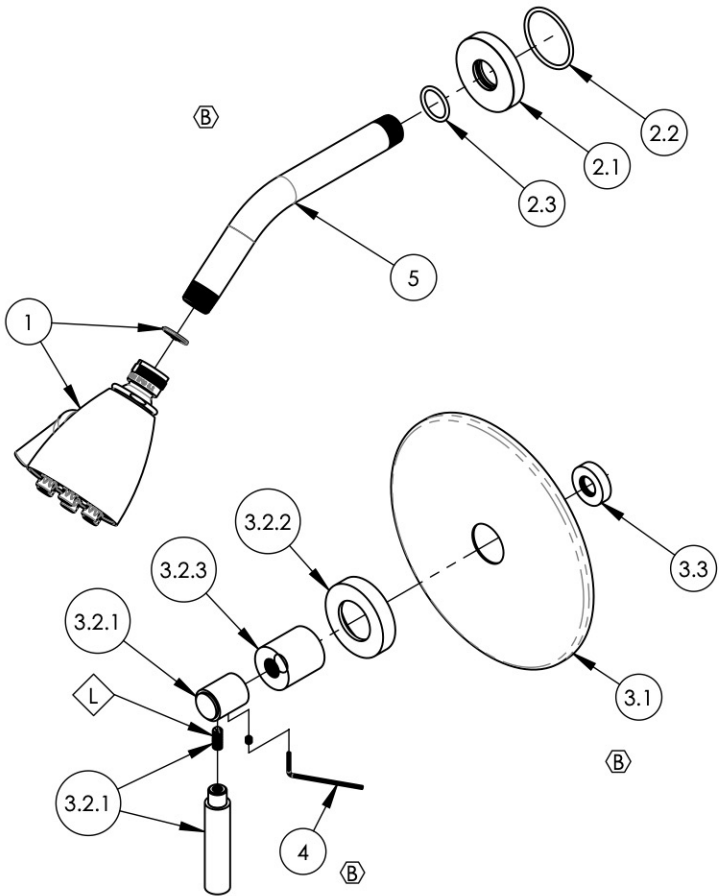


- NOTE(S):
1. PART NUMBER, "/00" DENOTES PART SHALL HAVE FINISH.
  2. APPLY NSF COMPLIANT GREASE TO ANY O-RING, SEALING JOINTS, AND/OR PIVOTAL POINTS.
  3. APPLY NSF COMPLIANT LOCTITE TO THREADED AREA.
  4. APPLY NSF COMPLIANT REMOVABLE (BLUE) LOCTITE TO THREADED AREA.
  5. SILVER SOLDER JOINTS SHALL BE FULLY WETTED VIA CAPILLARY ACTION AND COMPLETELY NON-POROUS.

- G**
- L**
- B**
- S**



ITEM NO.	PART NUMBER	DESCRIPTION	QTY.
1	3-018/00	SHOWERHEAD SIX JET	1
2	3-700/00	SHOWER FLANGE, CONTEMPORARY, ROUND	1
2.1	P16019/00	BASE SHOWER FLANGE, BASIC SERIES	1
2.2	90129	O-RING, 1-9/16"ID X 3/32THK., AS-568-129	1
2.3	90117	O-RING, 7/8"ID X 33/32"THK., AS-568-117	1
3	4-021/00	SHOWER TRIM PLATE, SINGLE HANDLE, LEVER, BASIC	1
3.1	P20016/00	TRIM PLATE, BASIC	1
3.2	3-441/00	ASSY, LEVER HANDLE, BASIC	1
3.2.1	3-408/00	ASSY. LEVER HANDLE, BASIC SERIES.	1
3.2.2	P02035_2/00	ESCUTCHEON, CONTEMPORARY	1
3.2.3	P02035_1/00	HUB ESCUTCHEON, CONTEMPORARY TOP	1
3.3	11087	SLEEVE FOR PB-THERM PLATE	1
4	92021	HEX KEY 5/64, FOR 8-32 SET SCREW	1
5	P16008/00	SHOWER ARM (8 INCH)	1

ALL	B	DISSOLVE SHOWER HEAD SUBASSY, ADD TRIM PLATE SUB ASSY, UPDATE HEX KEY	11/3/2021	AMM
ZONE	REV.	DESCRIPTION	DATE	APPROVED
REVISIONS				

1261 LOGAN AVENUE  
COSTA MESA, CALIFORNIA 92626  
PHONE: 714.361.4800  
FAX: 714.617.3120

**PHYLIRICH**<sup>®</sup>  
Defining Luxury Since 1959

**PROPRIETARY AND CONFIDENTIAL**  
THE INFORMATION CONTAINED IN THIS DRAWING IS THE SOLE PROPERTY OF PHYLIRICH. ANY REPRODUCTION IN PART OR AS A WHOLE WITHOUT THE WRITTEN PERMISSION OF PHYLIRICH IS PROHIBITED.  
**DO NOT SCALE DRAWING**

**SHOWER TRIM SET, PRESSURE BALANCE, LEVER TUBULAR, BASIC, (130-21)**

SIZE <b>A</b>	ASM/PRT NO. <b>DPB3130/00</b>	REV <b>B</b>
SCALE: 1:5	WEIGHT: lbs.	SHEET 1 OF 2