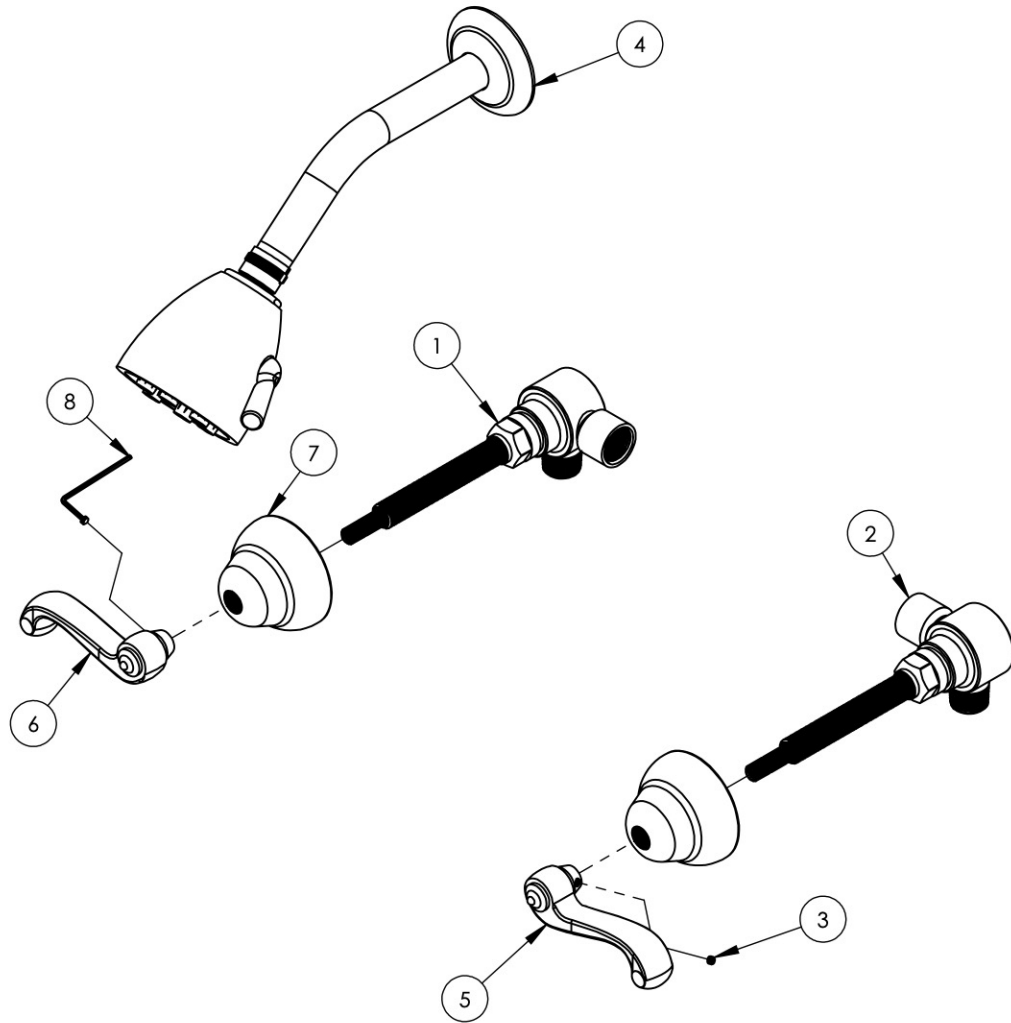


A

B

C

D



ITEM NO.	PART NUMBER	DESCRIPTION	QTY.
1	1-045	CORNER VALVE HOT WITH 1/2" FEM OUT 16PT	1
	10088	VALVE, INWALL ROUGH SIDE LEFT 1/2" G & NPT NIPPLE	1
	10211	CARTRIDGE, VALVE 1/2G20PT HOT LEAD FREE	1
	10054	STEM EXTENSION, 20PT INT. TO 16PT LONG EXT. BROACH	1
	92015	SCREW, SOCKET HEAD CAP, M4 THRD, 16MM LENGTH	1
	10058	NUT, ADAPTOR CART. TO THREADALL, M24X1.0 - 9/16"-20UN	1
	10209	SHANK, NIPPLE THREAD ALL 9/16"-20UN WITH .433"ID	1
	10069	NIPPLE, 1/2"NPT FEMALE INWALL VALVE ROUGH	1
2	1-046	CORNER VALVE COLD WITH 1/2" FEM OUT 16PT	1
	10089	VALVE, INWALL ROUGH SIDE RIGHT 1/2" G & NPT NIPPLE	1
	10210	CARTRIDGE, VALVE 1/2"G 20PT COLD LEAD FREE	1
	10054	STEM EXTENSION, 20PT INT. TO 16PT LONG EXT. BROACH	1
	92015	SCREW, SOCKET HEAD CAP, M4 THRD, 16MM LENGTH	1
	10058	NUT, ADAPTOR CART. TO THREADALL, M24X1.0 - 9/16"-20UN	1
	10209	SHANK, NIPPLE THREAD ALL 9/16"-20UN WITH .433"ID	1
	10069	NIPPLE, 1/2"NPT FEMALE INWALL VALVE ROUGH	1
3	92163	SET SCREW, CONE PT 8-32 X 1/8"L	2
4	K803	SMOOTH SHOWER HEAD	1
	P16008/00	SHOWER ARM (8 INCH)	1
	P16011/00	K803 SHOWER FLANGE	1
	90138	O-RING, 2 1/8"ID X 3/32"THK., AS-568-138	1
	90117	O-RING, 7/8"ID X 33/32"THK., AS-568-117	1
	P16014/00	K803 6 JET PLUNGER (RAW)	1
	92018/00	SCREW, FLAT HD SLOTTED MACHINE 10-32 THRD, 3/4" LENGTH	1
	P16014_1	K8036 JET PLUNGER (RAW)	1
	P16014_10	K8036 JET PLUNGER (RAW)	1
	P16014_11	K8036 JET PLUNGER (RAW)	1

E

ZONE	REV.	DESCRIPTION	DATE	APPROVED
REVISIONS				

1261 LOGAN AVENUE
COSTA MESA, CALIFORNIA 92626
PHONE: 714.361.4800
FAX: 714.617.3120



MANUFACTURING

PROPRIETARY AND CONFIDENTIAL

THE INFORMATION CONTAINED IN THIS DRAWING IS THE SOLE PROPERTY OF RSS MANUFACTURING. ANY REPRODUCTION IN PART OR AS A WHOLE WITHOUT THE WRITTEN PERMISSION OF RSS MANUFACTURING IS PROHIBITED.

-	-	INTERPRET GEOMETRIC DIMENSIONING & TOLERANCING IN ACCORDANCE WITH ASME Y14.5-2009 & ASME Y14.41-2003 STANDARDS, UNLESS OTHERWISE SPECIFIED. DIMENSIONS ARE IN INCHES. TOLERANCES ARE:		
NEXT ASSY	USED ON	FRACTIONS ±1/64"	DECIMALS X.X: ±.1 X.XX: ±.01 X.XXX: ±.005	ANGULAR ±.5°
APPLICATION		MATERIAL	NAME	DATE
FINISH		DRAWN	CA	10/14/2013
DO NOT SCALE DRAWING		CHECKED		

TWO HANDLE SHOWER SET, REVERE & SAVANNAH SERIES, CURVED LEVER

SIZE	ASM/PRT NO.	REV
A	D3102/00	
SCALE: 1:4	WEIGHT: lbs.	SHEET 1 OF 2

5

4

3

2

1