

5

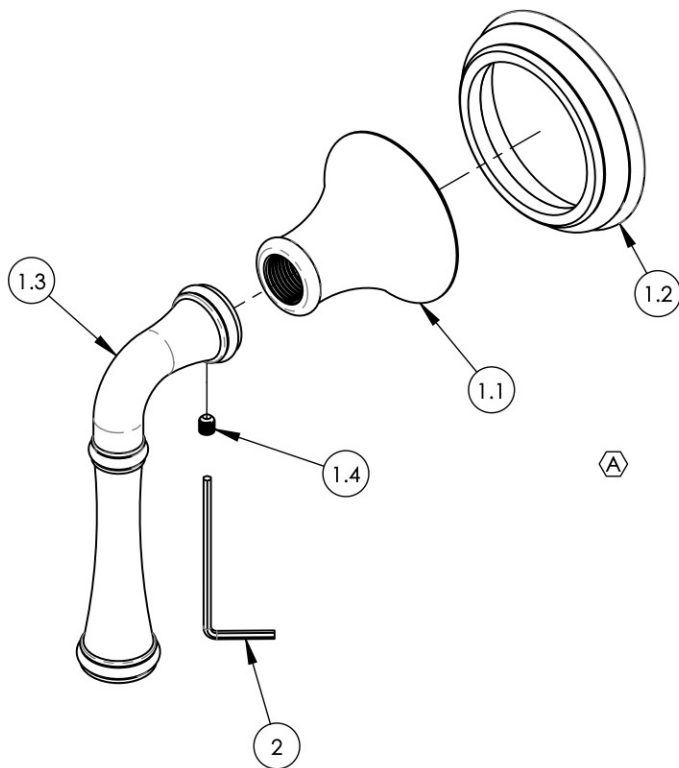
4

3

2

1

ITEM NO.	PART NUMBER	DESCRIPTION	QTY.
1	3-475/00	ASSY. LEVER HANDLE, 3 RING SERIES	1
1.1	10972/00	HUB, TRANSITIONAL 3RING	1
1.2	11188/00	ESCUTCHEON, HANDLE BASE 3RING	1
1.3	P01079/00	HANDLE, STRAIGHT LEVER 3RING 205	1
1.4	92008	SET SCREW, CUP POINT 8-32, 3/16" L.	1
2	P39001	HEX KEY 5/64, FOR 8-32 SET SCREW	1



ALL	REV.	DESCRIPTION	DATE	APPROVED
A		UPDATE TEMPLATE, ADD HANDLE SUBASSY	4/14/2020	AMM
REVISIONS				

1261 LOGAN AVENUE  
COSTA MESA, CALIFORNIA 92626  
PHONE: 714.361.4800  
FAX: 714.617.3120

**PHYLIRICH®**  
Defining Luxury Since 1959

**PROPRIETARY AND CONFIDENTIAL**

THE INFORMATION CONTAINED IN THIS DRAWING IS THE SOLE PROPERTY OF PHYLIRICH. ANY REPRODUCTION IN PART OR AS A WHOLE WITHOUT THE WRITTEN PERMISSION OF PHYLIRICH IS PROHIBITED.

-	-	INTERPRET GEOMETRIC DIMENSIONING & TOLERANCING IN ACCORDANCE WITH ASME Y14.5-2009 & ASME Y14.41-2003 STANDARDS, UNLESS OTHERWISE SPECIFIED. DIMENSIONS ARE IN INCHES. TOLERANCES ARE:		
NEXT ASSY	USED ON	<b>FRACTIONS</b> ±1/16"	<b>DECIMALS</b> X.X: ±.1 X.XX: ±.01 X.XXX: ±.005	<b>ANGULAR</b> ±2°
APPLICATION		MATERIAL	NAME	DATE
FINISH		DRAWN	CA	9/20/2013
<b>DO NOT SCALE DRAWING</b>		CHECKED		

VOLUME CONTROL / DIV. TRIM 3RING SERIES, STRAIGHT LEVER (205-35/00)

SIZE **A** ASM/PRT NO. **D2PV205A/00** REV **A**

SCALE: 1:2 WEIGHT: lbs. SHEET 1 OF 1

5

4

3

2

1