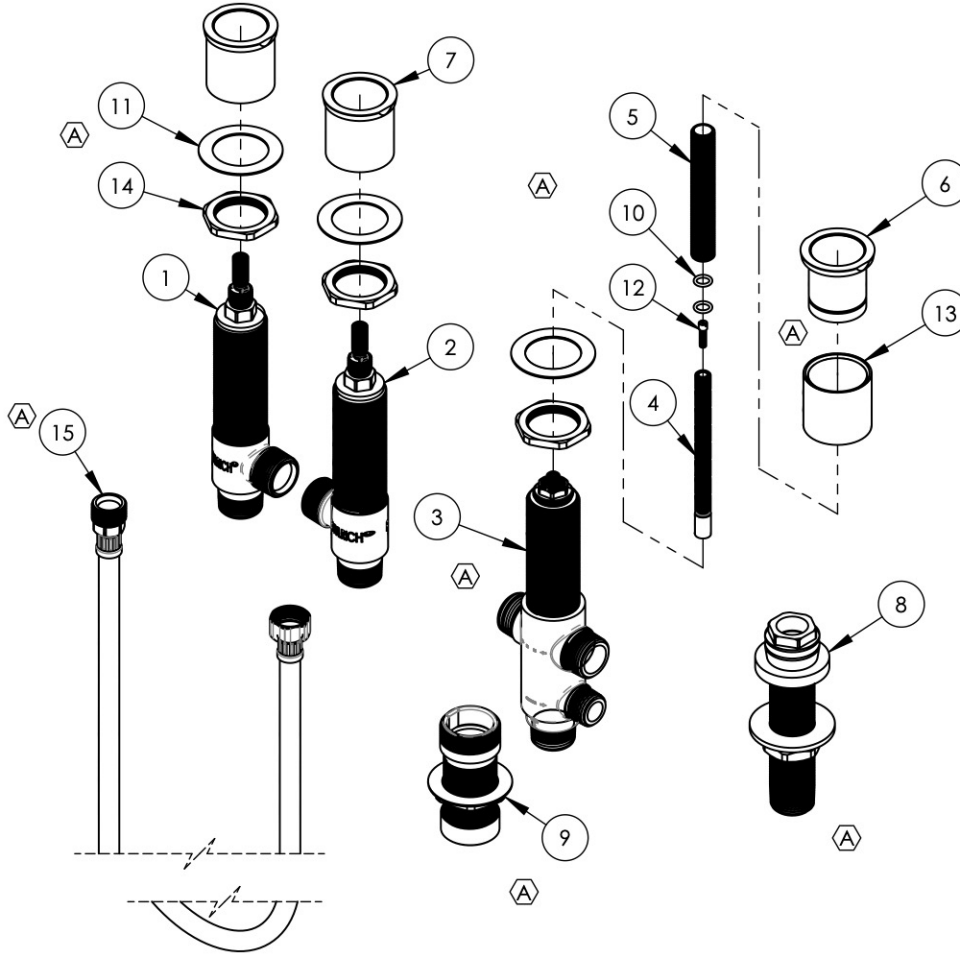


- NOTE(S):  
 1. PART NUMBER, "/00" DENOTES PART SHALL HAVE FINISH.  
 2. APPLY NSF COMPLIANT GREASE TO ANY O-RING, SEALING JOINTS, AND/OR PIVOTAL POINTS.  
 3. APPLY NSF COMPLIANT LOCTITE TO THREADED AREA.  
 4. APPLY NSF COMPLIANT REMOVABLE (BLUE) LOCTITE TO THREADED AREA.  
 5. SILVER SOLDER JOINTS SHALL BE FULLY WETTED VIA CAPILLARY ACTION AND COMPLETELY NON-POROUS.

- G
- L
- B
- S



| ITEM NO. | PART NUMBER | DESCRIPTION  | QTY. |
|----------|-------------|--|------|
| 1        | 1-064       | VALVE, ROMAN TUB 3/4" COLD                                 | 1    |
| 2        | 1-065       | VALVE, ROMAN TUB 3/4" HOT                                  | 1    |
| 3        | 1-081       | DECK DIVERTER VALVE ASSY, TWO FUNCTION                     | 1    |
| 4        | 10054       | STEM EXTENSION, 6" LONG 20PT INT. TO 16PT LONG EXT. BROACH | 1    |
| 5        | 10209       | SHANK, NIPPLE THREAD ALL 9/16"-20UN WITH .433"ID           | 1    |
| 6        | 11077       | SLEEVE MOUNT, DECK (ROMAN) TUB                             | 1    |
| 7        | 2-171       | CONVERSION KIT FOR DECK TUB SET                            | 1    |
| 8        | 2-187       | QUICK CONNECT KIT WITH NIPPLE                              | 1    |
| 9        | 2-191       | ASSY, HANDSHOWER ROUGH MOUNT                               | 1    |
| 10       | 90011       | O-RING, 5/16"ID X 1/16"THK, AS-568-011                     | 2    |
| 11       | 92138       | BRASS WASHER, THIN   | 3    |
| 12       | 92157       | SCREW, SMALL HD M4X0.7 - 1/2"L                             | 1    |
| 13       | 92180       | EXTENSION SLEEVE, WIDESPREAD                               | 1    |
| 14       | 92313       | HEX NUT, 1-1/4"-20 THREAD                                  | 3    |
| 15       | K6100X5HP   | HOSE, HIGH PRESSURE, 1/2" X 14 NPS, 36" L                  | 1    |

| ALL       | A    | UPDATE HOSE, HS MOUNT, DIVERTER ASSY, REMOVE QUICK CONNECT T, ADD SLEEVE MOUNT, NUT/WASHER | 7/12/2021 | AMM      |
|-----------|------|--|-----------|----------|
| ZONE      | REV. | DESCRIPTION  | DATE      | APPROVED |
| REVISIONS |      |  |           |          |

1261 LOGAN AVENUE  
 COSTA MESA, CALIFORNIA 92626  
 PHONE: 714.361.4800  
 FAX: 714.617.3120



MANUFACTURING

**PROPRIETARY AND CONFIDENTIAL**  
 THE INFORMATION CONTAINED IN THIS DRAWING IS THE SOLE PROPERTY OF RSS MANUFACTURING. ANY REPRODUCTION IN PART OR AS A WHOLE WITHOUT THE WRITTEN PERMISSION OF RSS MANUFACTURING IS PROHIBITED.

| NEXT ASSY   | USED ON | FRACTIONS | DECIMALS                               | ANGULAR   |
|-------------|---------|-----------|--|-----------|
| -           | -       | ±1/64"    | X.X: ±.1<br>X.XX: ±.01<br>X.XXX: ±.005 | ±.5°      |
| APPLICATION |         | NAME      | DATE                                   |           |
| MATERIAL    |         | DRAWN     | LLO                                    | 12/9/2015 |
| FINISH      |         | CHECKED   | GRE                                    |           |

**DO NOT SCALE DRAWING**

| DECK TUB WITH HAND SHOWER VALVE (MIX-STRIA) |              |              |  |
|---|--------------|--------------|--|
| SIZE  | ASM/PRT NO.  | REV          |  |
| <b>A</b>                                    | 80001247     | A            |  |
| SCALE: 1:4.5                                | WEIGHT: lbs. | SHEET 1 OF 2 |  |