

5

4

3

2

1

NOTE(S):
1. PART NUMBER, "/00" DENOTES PART SHALL HAVE FINISH.

2. APPLY NSF COMPLIANT GREASE TO ANY O-RING, SEALING JOINTS, AND/OR PIVOTAL POINTS:



3. APPLY NSF COMPLIANT LOCTITE TO THREADED AREA:



4. APPLY NSF COMPLIANT REMOVABLE (BLUE) LOCTITE TO THREADED AREA:

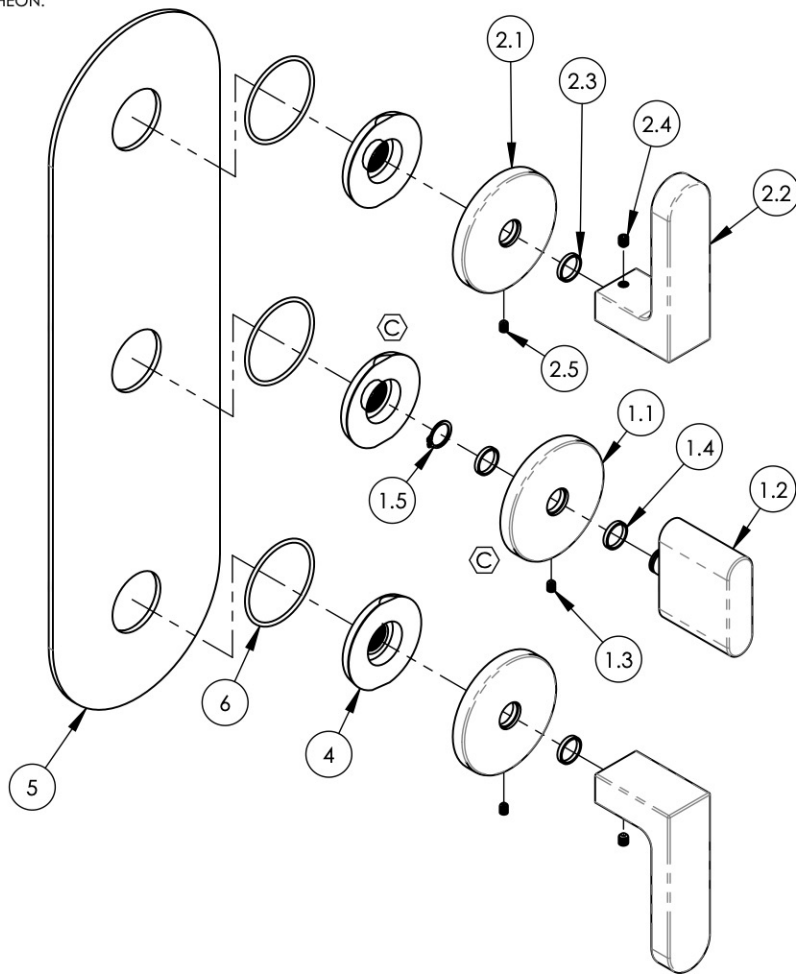


5. SILVER SOLDER JOINTS SHALL BE FULLY WETTED VIA CAPILLARY ACTION AND COMPLETELY NON-POROUS:



6. FOR DEEPEER ESCUTCHEON:

- 3-587/00 (BLADE)
- 3-589/00 (LEVER)
- 92401



ITEM NO.	PART NUMBER	DESCRIPTION	QTY.
1	3-584/00	ASSY, BLADE HANDLE, ROND	1
1.1	11749/00	ESCUTCHEON, HANDLE, ROND	1
1.2	11748/00	HANDLE, BLADE, ROND	1
1.3	92005	SET SCREW, CUP PT 6-32 UNC THREAD 3/16"L	1
1.4	92176	WEAR WASHER	2
1.5	92177	RETAINING RING, 7/16" SHAFT	1
2.1	11749/00	ESCUTCHEON, HANDLE, ROND	1
2.2	11752/00	HANDLE, LEVER, ROND	1
2.3	92176	WEAR WASHER	1
2.4	92008	SET SCREW, CUP POINT 8-32, 3/16" L.	1
2.5	92005	SET SCREW, CUP PT 6-32 UNC THREAD 3/16"L	1
3	3-585/00	ASSY, LEVER HANDLE, ROND	2
3.1	11749/00	ESCUTCHEON, HANDLE, ROND	1
3.2	11752/00	HANDLE, LEVER, ROND	1
3.3	92176	WEAR WASHER	1
3.4	92008	SET SCREW, CUP POINT 8-32, 3/16" L.	1
3.5	92005	SET SCREW, CUP PT 6-32 UNC THREAD 3/16"L	1
4	11003	SLEEVE MOUNT, WALL MT WIDESPREAD	3
5	11757/00	TRIM PLATE, THREE HOLE, ROND	1
6	90029	O-RING, 1-5/8"ID X 1-3/4"OD X 1/16"THK, AS-568-029	3

C4, D5	C	UPDATE SLEEVE MOUNT & HANDLE ASSY, ADD NOTE	2/16/2021	AMM
ZONE	REV.	DESCRIPTION	DATE	APPROVED
REVISIONS				

1261 LOGAN AVENUE
COSTA MESA, CALIFORNIA 92626
PHONE: 714.361.4800
FAX: 714.617.3120

PHYLIRICH[®]
Defining Luxury Since 1959

PROPRIETARY AND CONFIDENTIAL
THE INFORMATION CONTAINED IN THIS DRAWING IS THE SOLE PROPERTY OF PHYLIRICH. ANY REPRODUCTION IN PART OR AS A WHOLE WITHOUT THE WRITTEN PERMISSION OF PHYLIRICH IS PROHIBITED.
DO NOT SCALE DRAWING

SHOWER TRIM PLATE, THREE HANDLE, LEVER, ROND

SIZE A	ASM/PRT NO. 4-578/00	REV C
SCALE: 1:3.25	WEIGHT: lbs.	SHEET 1 OF 2

5

4

3

2

1