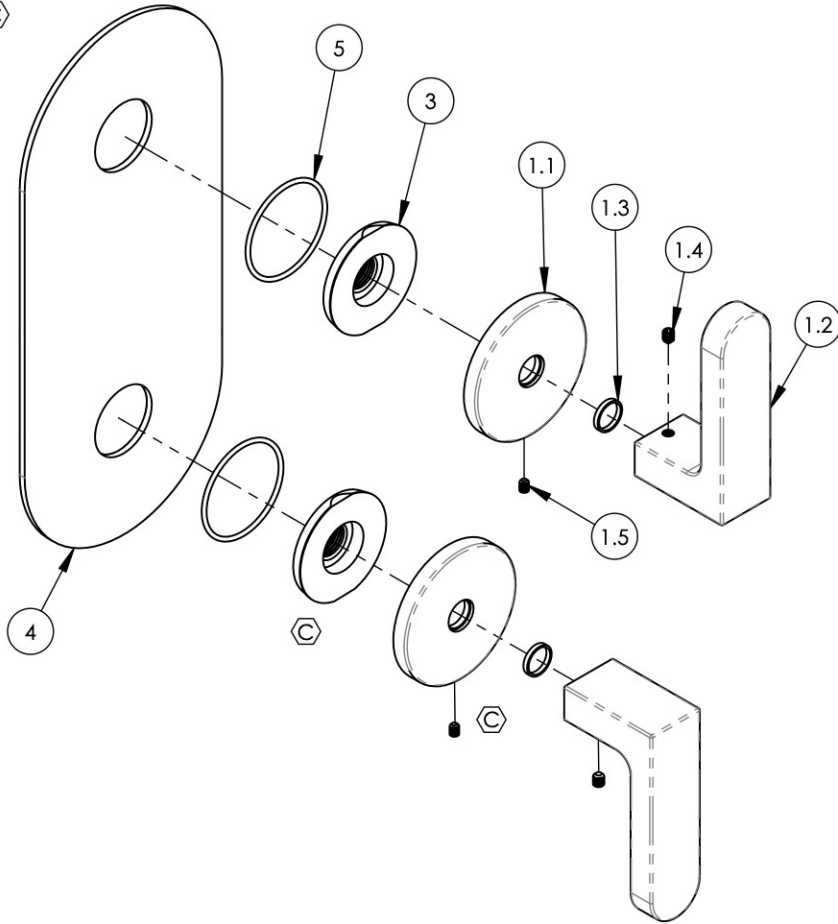


NOTE(S):

1. PART NUMBER, "/00" DENOTES PART SHALL HAVE FINISH.
2. APPLY NSF COMPLIANT GREASE TO ANY O-RING, SEALING JOINTS, AND/OR PIVOTAL POINTS. ◇ G
3. APPLY NSF COMPLIANT LOCTITE TO THREADED AREA. ◇ L
4. APPLY NSF COMPLIANT REMOVABLE (BLUE) LOCTITE TO THREADED AREA. ◇ B
5. SILVER SOLDER JOINTS SHALL BE FULLY WETTED VIA CAPILLARY ACTION AND COMPLETELY NON-POROUS. ◇ S
6. FOR DEEPEER ESCUTCHEON:
  - 3-589/00 ◇ C
  - 92401 ◇ C



ITEM NO.	PART NUMBER	DESCRIPTION	QTY.
1	3-585/00	ASSY, LEVER HANDLE, ROND	1
1.1	11749/00	ESCUTCHEON, HANDLE, ROND	1
1.2	11752/00	HANDLE, LEVER, ROND	1
1.3	92176	WEAR WASHER	1
1.4	92008	SET SCREW, CUP POINT 8-32, 3/16" L.	1
1.5	92005	SET SCREW, CUP PT 6-32 UNC THREAD 3/16"L	1
2	3-585/00	ASSY, LEVER HANDLE, ROND	1
2.1	11749/00	ESCUTCHEON, HANDLE, ROND	1
2.2	11752/00	HANDLE, LEVER, ROND	1
2.3	92176	WEAR WASHER	1
2.4	92008	SET SCREW, CUP POINT 8-32, 3/16" L.	1
2.5	92005	SET SCREW, CUP PT 6-32 UNC THREAD 3/16"L	1
3	11003	SLEEVE MOUNT, WALL MT WIDESPREAD	2
4	11672/00	TRIM PLATE, TWO HANDLE, ROND	1
5	90029	O-RING, 1-5/8"ID X 1-3/4"OD X 1/16"THK, AS-568-029	2

ZONE	REV.	DESCRIPTION	DATE	APPROVED
B4, E5	C	UPDATE SLEEVE MOUNT & HANDLE ASSY, ADD NOTE	2/15/2021	AMM
REVISIONS				

1261 LOGAN AVENUE  
COSTA MESA, CALIFORNIA 92626  
PHONE: 714.361.4800  
FAX: 714.617.3120

**PHYL RICH**<sup>®</sup>  
Defining Luxury Since 1959

**PROPRIETARY AND CONFIDENTIAL**  
THE INFORMATION CONTAINED IN THIS DRAWING IS THE SOLE PROPERTY OF PHYL RICH. ANY REPRODUCTION IN PART OR AS A WHOLE WITHOUT THE WRITTEN PERMISSION OF PHYL RICH IS PROHIBITED.  
**DO NOT SCALE DRAWING**

ASSY, TWO HANDLE, LEVER, TRIM ONLY,  
ROND

SIZE	ASM/PRT NO.	REV
<b>A</b>	4-576/00	<b>C</b>
SCALE: 1:2.75	WEIGHT: lbs.	SHEET 1 OF 2