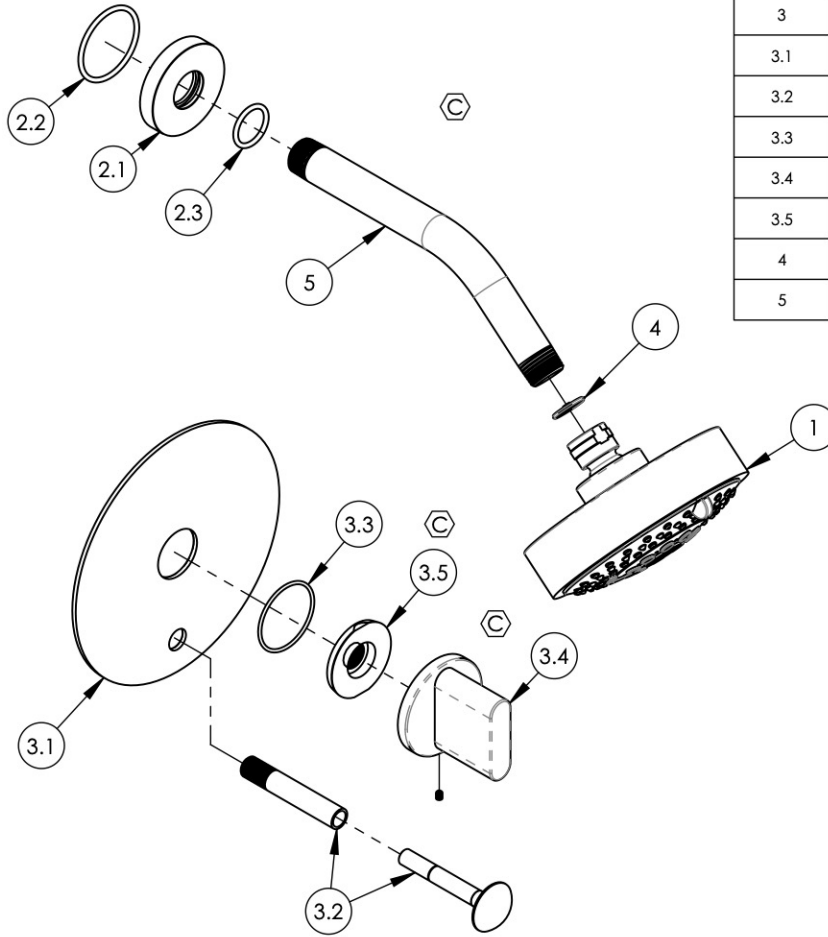


- NOTE(S):
- PART NUMBER, "/00" DENOTES PART SHALL HAVE FINISH.
 - APPLY NSF COMPLIANT GREASE TO ANY O-RING, SEALING JOINTS, AND/OR PIVOTAL POINTS. G
 - APPLY NSF COMPLIANT LOCTITE TO THREADED AREA. L
 - APPLY NSF COMPLIANT REMOVABLE (BLUE) LOCTITE TO THREADED AREA. B
 - SILVER SOLDER JOINTS SHALL BE FULLY WETTED VIA CAPILLARY ACTION AND COMPLETELY NON-POROUS. S
 - FOR DEEPEER ESCUTCHEON:
 - 3-587/00 C
 - 92401 C



ITEM NO.	PART NUMBER	DESCRIPTION	QTY.
1	3-454/00	SHOWER HEAD MULTI. FUNC. CONTEMP.	1
2	3-700/00	ESCUTCHEON FLANGE, SHOWER ARM, CONTEMPORARY, ROUND	1
2.1	P16019/00	BASE SHOWER FLANGE, BASIC SERIES	1
2.2	90129	O-RING, 1-9/16"ID X 3/32"THK., AS-568-129	1
2.3	90117	O-RING, 7/8"ID X 33/32"THK., AS-568-117	1
3	4-553/00	ASSY, BLADE HANDLE W/ DIVERTER, TRIM, ROND	1
3.1	10445/00	TRIM PLATE 6" ROUND W/ DIVERTER HOLE, BASIC II	1
3.2	3-125/00	DIVERTER EXTENSION ASSY FOR PB TUB & SHOWER SET	1
3.3	90029	O-RING, 1-5/8"ID X 1-3/4"OD X 1/16"THK., AS-568-029	1
3.4	3-584/00	ASSY, BLADE HANDLE, ROND	1
3.5	11003	SLEEVE MOUNT, WALL MT WIDESPREAD	1
4	11432	1.75 GPM FLOW REGULATOR	1
5	P16008/00	SHOWER ARM (8 INCH)	1

ZONE	REV.	DESCRIPTION	DATE	APPROVED
D4, C4	C	UPDATE SLEEVE MOUNT & HANDLE ASSY, REMOVE SHOWER HEAD SUB-ASSY, ADD NOTE	2/15/2021	AMM
REVISIONS				

1261 LOGAN AVENUE
COSTA MESA, CALIFORNIA 92626
PHONE: 714.361.4800
FAX: 714.617.3120

PHYLIRICH[®]
Defining Luxury Since 1959

PROPRIETARY AND CONFIDENTIAL
THE INFORMATION CONTAINED IN THIS DRAWING IS THE SOLE PROPERTY OF PHYLIRICH. ANY REPRODUCTION IN PART OR AS A WHOLE WITHOUT THE WRITTEN PERMISSION OF PHYLIRICH IS PROHIBITED.
DO NOT SCALE DRAWING

ASSY, PRESSURE BALANCE SHOWER & DIVERTER SET(LESS SPOUT)

SIZE A	ASM/PRT NO. 4-572/00	REV C
SCALE: 1:4	WEIGHT: lbs.	SHEET 1 OF 2