

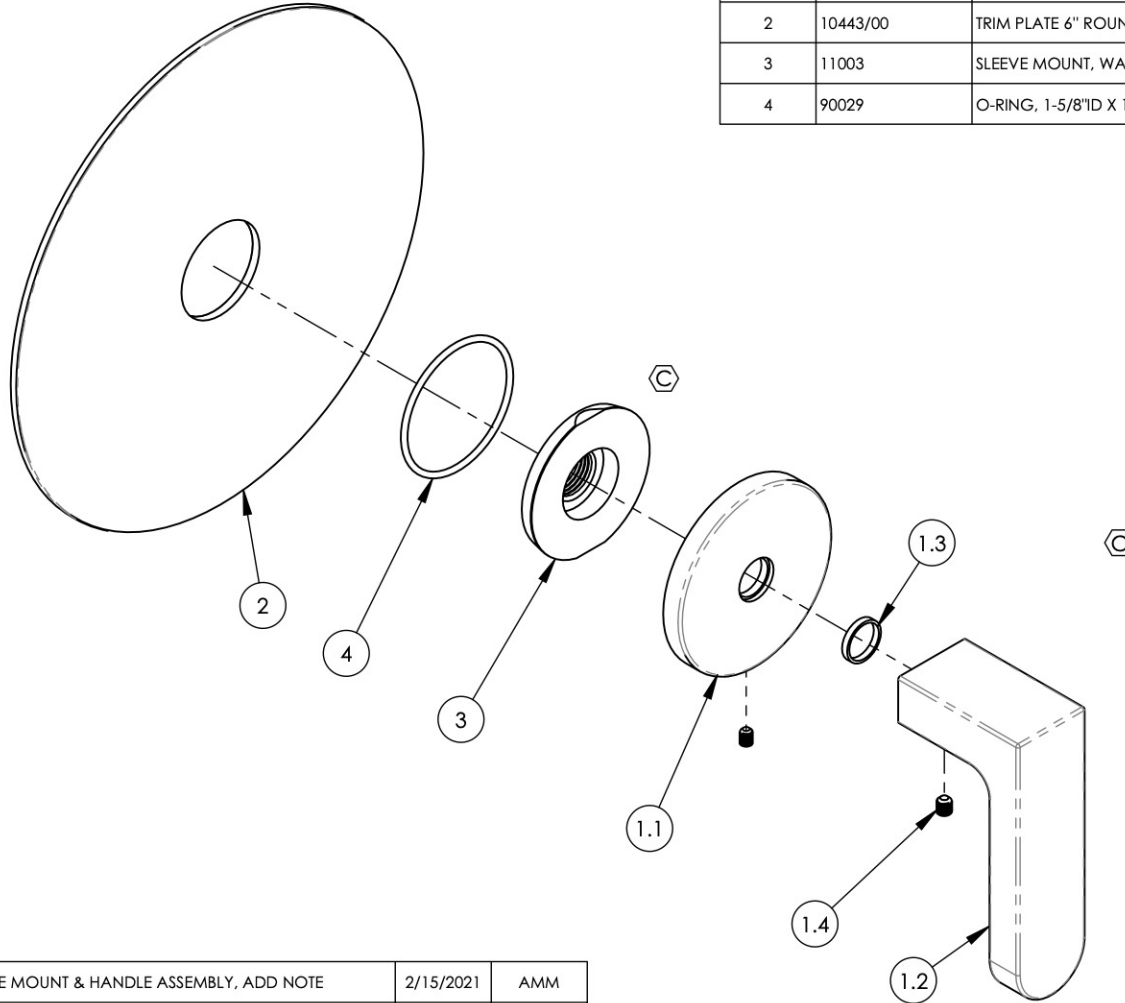


- NOTE(S):
- PART NUMBER, "/00" DENOTES PART SHALL HAVE FINISH.
  - APPLY NSF COMPLIANT GREASE TO ANY O-RING, SEALING JOINTS, AND/OR PIVOTAL POINTS: **G**
  - APPLY NSF COMPLIANT LOCTITE TO THREADED AREA: **L**
  - APPLY NSF COMPLIANT REMOVABLE (BLUE) LOCTITE TO THREADED AREA: **B**
  - SILVER SOLDER JOINTS SHALL BE FULLY WETTED VIA CAPILLARY ACTION AND COMPLETELY NON-POROUS: **S**
  - FOR DEEPEER ESCUTCHEON:
    - 3-589/00 
    - 92401 

ITEM NO.	PART NUMBER	DESCRIPTION	QTY.
1	3-585/00	ASSY, LEVER HANDLE, ROND	1
1.1	11749/00	ESCUTCHEON, HANDLE, ROND	1
1.2	11752/00	HANDLE, LEVER, ROND	1
1.3	92176	WEAR WASHER	1
1.4	92008	SET SCREW, CUP POINT 8-32, 3/16" L.	1
1.5	92005	SET SCREW, CUP PT 6-32 UNC THREAD 3/16"L	1
2	10443/00	TRIM PLATE 6" ROUND, BASIC II	1
3	11003	SLEEVE MOUNT, WALL MT WIDESPREAD	1
4	90029	O-RING, 1-5/8"ID X 1-3/4"OD X 1/16"THK, AS-568-029	1



C3, C2	C	UPDATE SLEEVE MOUNT & HANDLE ASSEMBLY, ADD NOTE	2/15/2021	AMM
ZONE	REV.	DESCRIPTION	DATE	APPROVED
REVISIONS				

1261 LOGAN AVENUE  
COSTA MESA, CALIFORNIA 92626  
PHONE: 714.361.4800  
FAX: 714.617.3120

**PHYLIRICH**<sup>®</sup>  
Defining Luxury Since 1959

**PROPRIETARY AND CONFIDENTIAL**  
THE INFORMATION CONTAINED IN THIS DRAWING IS THE SOLE PROPERTY OF PHYLIRICH. ANY REPRODUCTION IN PART OR AS A WHOLE WITHOUT THE WRITTEN PERMISSION OF PHYLIRICH IS PROHIBITED.  
**DO NOT SCALE DRAWING**

ASSY, SINGLE HANDLE TRIM, LEVER, ROND

SIZE <b>A</b>	ASM/PRT NO. 4-571/00	REV C
SCALE: 1:2	WEIGHT: lbs.	SHEET 1 OF 2