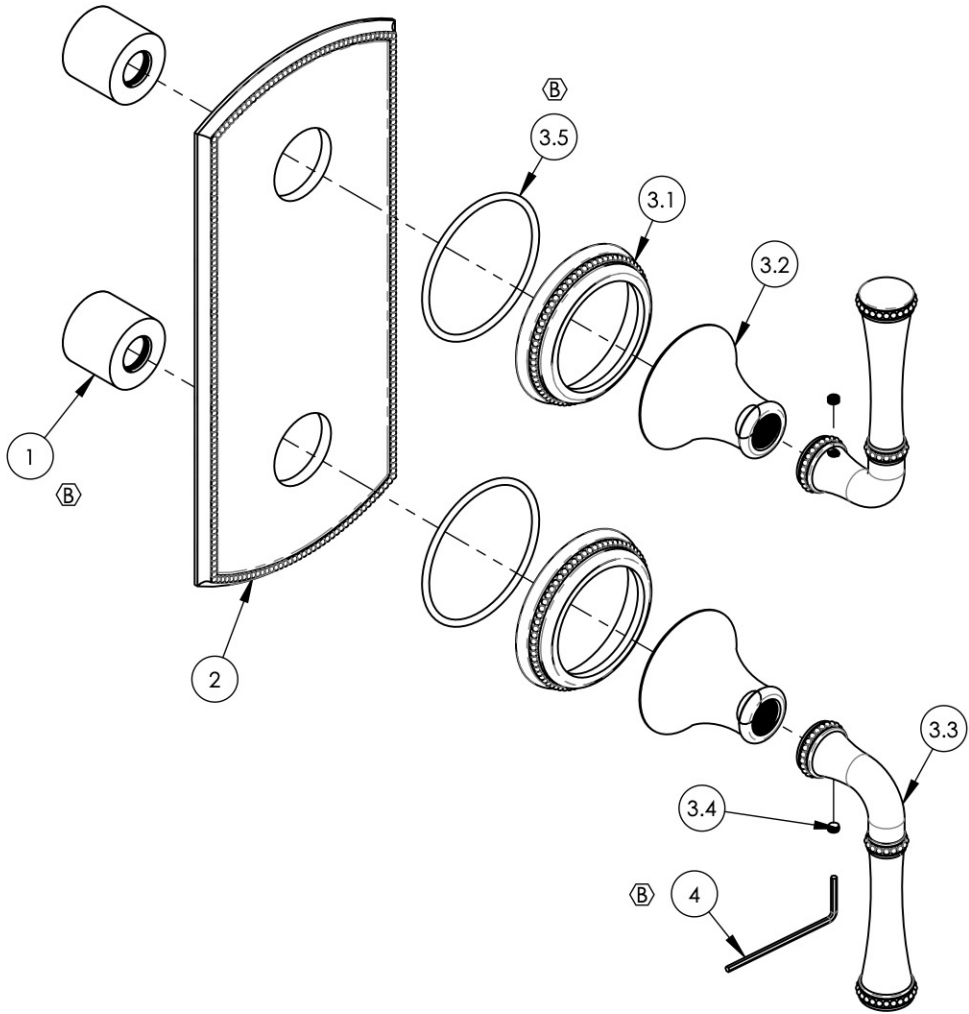


| ITEM NO. | PART NUMBER | DESCRIPTION | QTY. |
|----------|-------------|--|------|
| 1 | 11087 | SLEEVE FOR PB-THERM PLATE | 2 |
| 2 | 11187/00 | PLATE , TWO HANDLE BEEDED | 1 |
| 3 | 3-311/00 | LEVER HANDLE, BEEDED SERIES | 2 |
| 3.1 | 10973/00 | ESCUTCHEON, BEEDED HANDLE | 1 |
| 3.2 | 10972/00 | HUB, TRANSITIONAL 3RING | 1 |
| 3.3 | 10971/00 | HANDLE, BEEDED LEVER 3RING | 1 |
| 3.4 | 92163 | SET SCREW, CONE PT 8-32 X 1/8"L | 1 |
| 3.5 | 90138 | O-RING, 2 1/8"ID X 3/32"THK., AS-568-138 | 1 |
| 4 | P39001 | HEX KEY 5/64, FOR 8-32 SET SCREW | 1 |



| ALL | B | UPDATE TEMPLATE, SLEEVE MOUNT, HANDLE ASSY, SEPARATE HEX KEY | 4/6/2020 | AMM |
|-----------|------|--|----------|----------|
| ZONE | REV. | DESCRIPTION | DATE | APPROVED |
| REVISIONS | | | | |

1261 LOGAN AVENUE
COSTA MESA, CALIFORNIA 92626
PHONE: 714.361.4800
FAX: 714.617.3120

PHYLIRICH[®]
Defining Luxury Since 1959

PROPRIETARY AND CONFIDENTIAL
THE INFORMATION CONTAINED IN THIS DRAWING IS THE SOLE PROPERTY OF PHYLIRICH. ANY REPRODUCTION IN PART OR AS A WHOLE WITHOUT THE WRITTEN PERMISSION OF PHYLIRICH IS PROHIBITED.

| | | | | |
|-----------------------------|---------|---|---|-----------------------|
| - | - | INTERPRET GEOMETRIC DIMENSIONING & TOLERANCING IN ACCORDANCE WITH ASME Y14.5-2009 & ASME Y14.41-2003 STANDARDS, UNLESS OTHERWISE SPECIFIED. DIMENSIONS ARE IN INCHES. TOLERANCES ARE: | | |
| NEXT ASSY | USED ON | FRACTIONS ±1/16" | DECIMALS X.X: ±.1 X.XX: ±.01 X.XXX: ±.005 | ANGULAR ±2° |
| APPLICATION | | MATERIAL | NAME | DATE |
| FINISH | | DRAWN | LLO | 10/1/2015 |
| DO NOT SCALE DRAWING | | CHECKED | GRE | |

1/2" MINI THERM VALVE W/ VOLUME CONTROL OR DIVERTER

| SIZE | ASM/PRT NO. | REV |
|---------------|--------------|--------------|
| A | 4-131/00 | B |
| SCALE: 1:2.75 | WEIGHT: lbs. | SHEET 1 OF 2 |