

NOTE(S):  
 1. PART NUMBER, "/00" DENOTES PART SHALL HAVE FINISH.

2. APPLY NSF COMPLIANT GREASE TO ANY O-RING, SEALING JOINTS, AND/OR PIVOTAL POINTS.

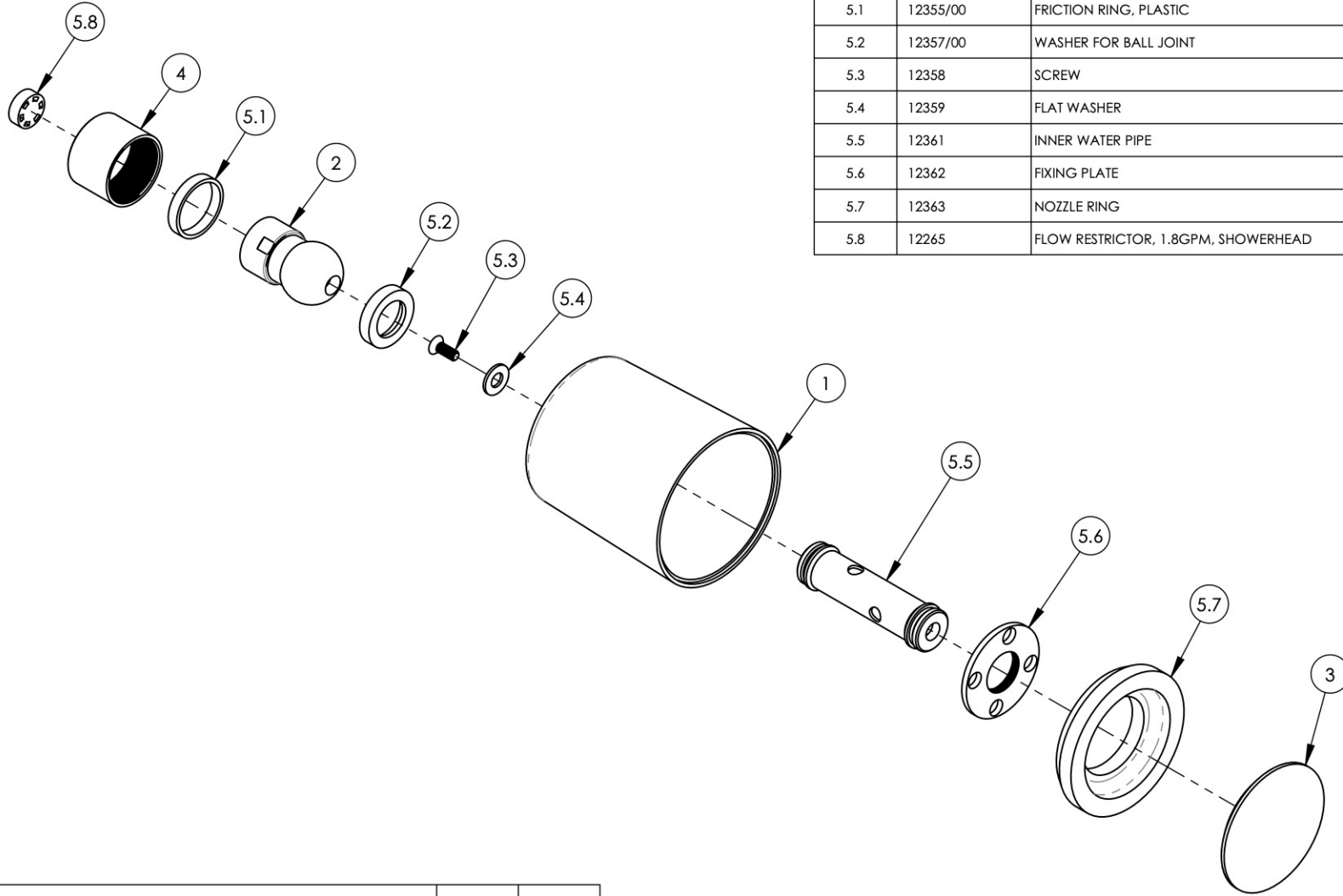
3. APPLY NSF COMPLIANT LOCTITE TO THREADED AREA.

4. APPLY NSF COMPLIANT REMOVABLE (BLUE) LOCTITE TO THREADED AREA.

5. SILVER SOLDER JOINTS SHALL BE FULLY WETTED VIA CAPILLARY ACTION AND COMPLETELY NON-POROUS.



ITEM NO.	PART NUMBER	DESCRIPTION	QTY.
1	12360/00	MAIN BODY	1
2	12356/00	BALL JOINT	1
3	12364/00	FACEPLATE	1
4	12354/00	NUT FOR BALL JOINT	1
5	2-406	INTERNAL KIT, ROUND SHOWER HEAD	1
5.1	12355/00	FRICTION RING, PLASTIC	1
5.2	12357/00	WASHER FOR BALL JOINT	1
5.3	12358	SCREW	1
5.4	12359	FLAT WASHER	1
5.5	12361	INNER WATER PIPE	1
5.6	12362	FIXING PLATE	1
5.7	12363	NOZZLE RING	1
5.8	12265	FLOW RESTRICTOR, 1.8GPM, SHOWERHEAD	1



ZONE	REV.	DESCRIPTION	DATE	APPROVED
------	------	-------------	------	----------

REVISIONS

1261 LOGAN AVENUE  
 COSTA MESA, CALIFORNIA 92626  
 PHONE: 714.361.4800  
 FAX: 714.617.3120

**PHYLIRICH**<sup>®</sup>  
 Defining Luxury Since 1959

**PROPRIETARY AND CONFIDENTIAL**  
 THE INFORMATION CONTAINED IN THIS DRAWING IS THE SOLE PROPERTY OF PHYLIRICH. ANY REPRODUCTION IN PART OR AS A WHOLE WITHOUT THE WRITTEN PERMISSION OF PHYLIRICH IS PROHIBITED.  
**DO NOT SCALE DRAWING**

SHOWER HEAD, ROUND, 68MM

SIZE <b>A</b>	ASM/PRT NO. 3-757/00	REV -
------------------	-------------------------	----------

SCALE: 1:2.5      WEIGHT: lbs.      SHEET 1 OF 2