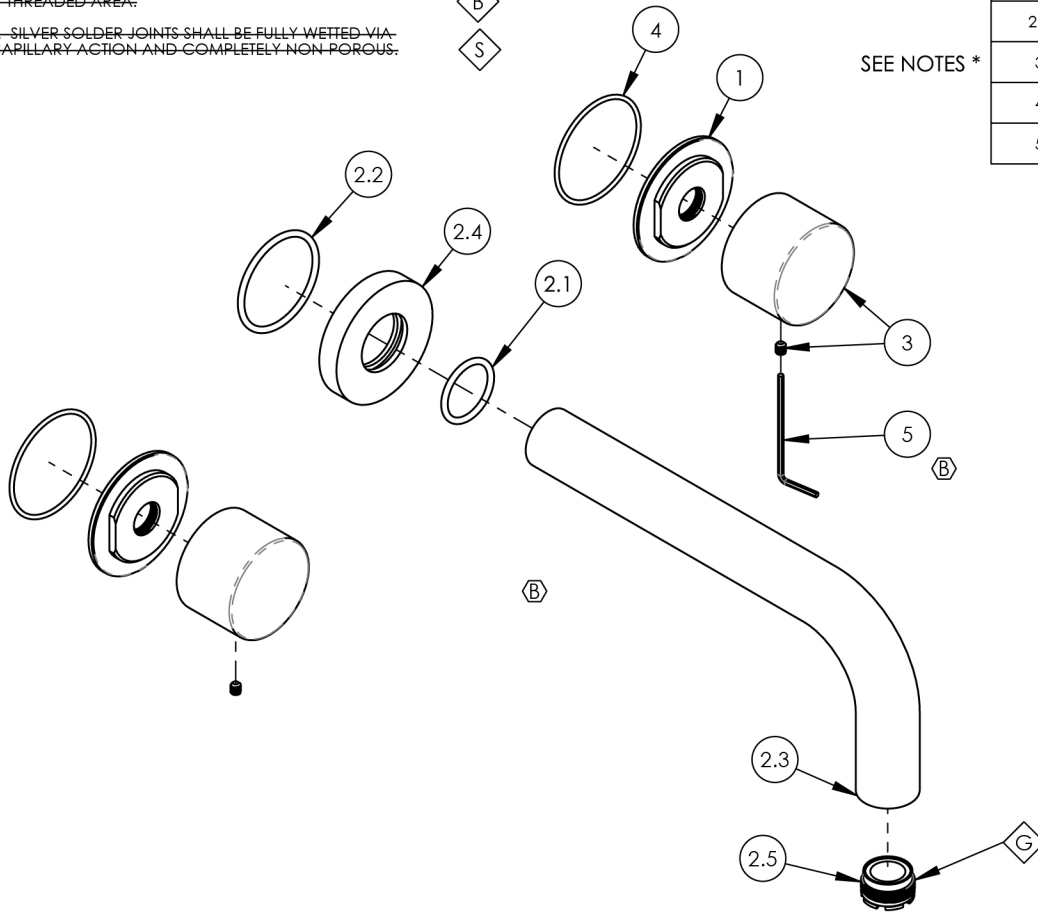


- NOTE(S):
- EXAMPLE OF SPLIT FINISH CODE:
A. 230-03/026X030
 - MARBLE HANDLE STONE OPTIONS:
A. BLACK MARBLE = 3-570 (.../00X030)
B. WHITE MARBLE = 3-571 (.../00X031)
C. SOAPSTONE = 3-572 (.../00X032)
 - APPLY NSF COMPLIANT GREASE TO ANY O-RING, SEALING JOINTS, AND/OR PIVOTAL POINTS. G
 - APPLY NSF COMPLIANT LOCTITE TO THREADED AREA. L
 - APPLY NSF COMPLIANT REMOVABLE (BLUE) LOCTITE TO THREADED AREA. B
 - SILVER SOLDER JOINTS SHALL BE FULLY WETTED VIA CAPILLARY ACTION AND COMPLETELY NON-POROUS. S

ITEM NO.	PART NUMBER	DESCRIPTION	QTY.
1	11164/00	ESCUTCHEON BASE, CONTEMP. BASIC II	2
2	3-418/00	WALL TUB, SPOUT ONLY, 7-1/2" L, BASIC	1
2.1	90119	O-RING, 15/16"ID X 1-1/8"OD X 3/32"THK, AS-568-119	1
2.2	90129	O-RING, 1-9/16"ID X 3/32THK, AS-568-129	1
2.3	P19018/00	7-1/2" WALL LAV SPOUT, BASIC SERIES	1
2.4	P19017/00	ESCUTCHEON, FOR SPOUT	1
2.5	P05024	AERATOR CACHE COIN SLOT, M21.5X1.0 FULL FLOW	1
3	3-570	HANDLE, ROUND MARBLE, BLACK (030) ASSY	2
4	90031	O-RING, 1-3/4"ID X 1/16"THK, AS-568-031	2
5	92021	HEX KEY 5/64, FOR 8-32 SET SCREW	1

SEE NOTES *



ALL	B	UPDATE SPOUT ASSEMBLY, ADD HEX KEY	2/24/2022	AMM
ZONE	REV.	DESCRIPTION	DATE	APPROVED
REVISIONS				

1261 LOGAN AVENUE
COSTA MESA, CALIFORNIA 92626
PHONE: 714.361.4800
FAX: 714.617.3120

PHYLIRICH[®]
Defining Luxury Since 1959

PROPRIETARY AND CONFIDENTIAL
THE INFORMATION CONTAINED IN THIS DRAWING IS THE SOLE PROPERTY OF PHYLIRICH. ANY REPRODUCTION IN PART OR AS A WHOLE WITHOUT THE WRITTEN PERMISSION OF PHYLIRICH IS PROHIBITED.
DO NOT SCALE DRAWING

WALL TUB SET, SPOUT 7-1/2" W/ MARBLE, BASIC II

SIZE	ASM/PRT NO.	REV
A	230-58/00	B
SCALE: 1:3	WEIGHT: lbs.	SHEET 1 OF 2