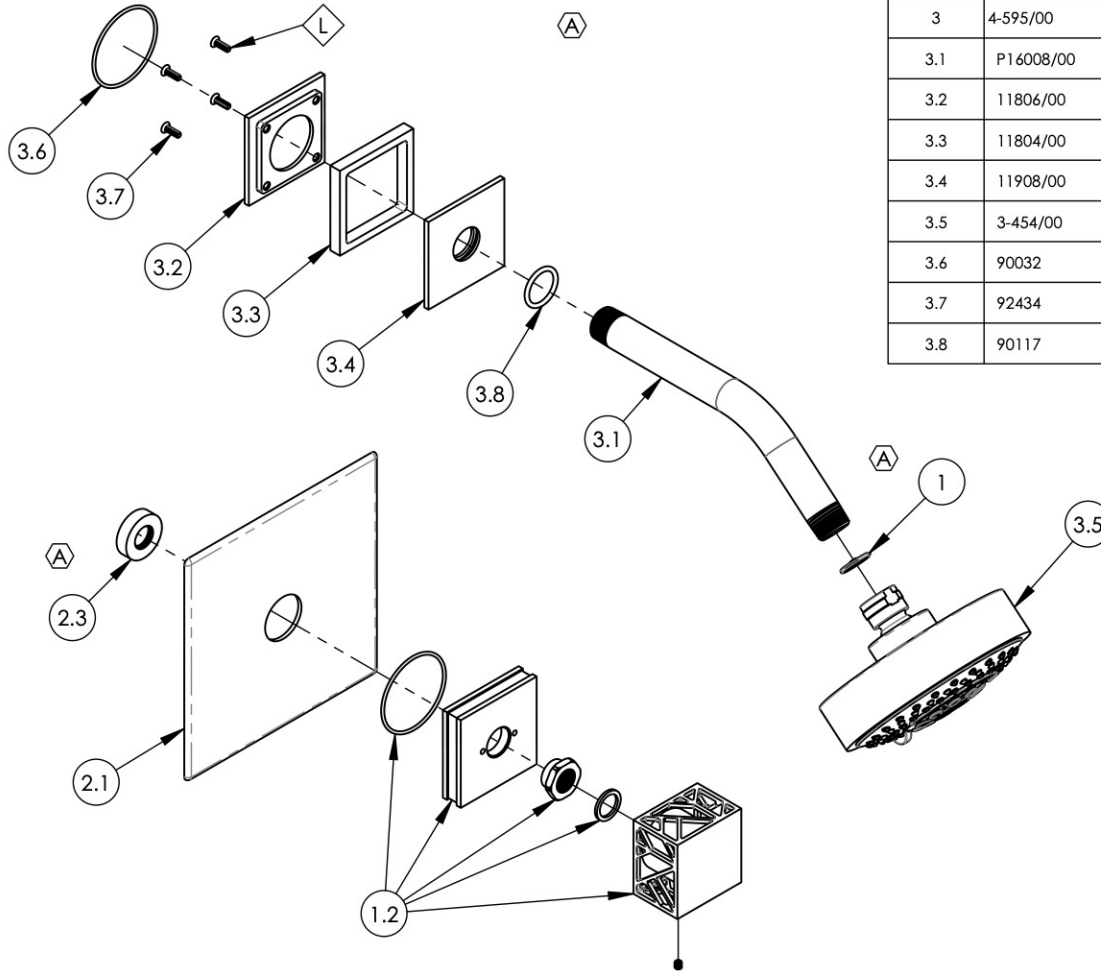


- NOTE(S):
1. PART NUMBER, "/00" DENOTES PART SHALL HAVE FINISH.
  2. APPLY NSF COMPLIANT GREASE TO ANY O-RING, SEALING JOINTS, AND/OR PIVOTAL POINTS.
  3. APPLY NSF COMPLIANT LOCTITE TO THREADED AREA.
  4. APPLY NSF COMPLIANT REMOVABLE (BLUE) LOCTITE TO THREADED AREA.
  5. SILVER SOLDER JOINTS SHALL BE FULLY WETTED VIA CAPILLARY ACTION AND COMPLETELY NON-POROUS.

- G
- L
- B
- S



ITEM NO.	PART NUMBER	DESCRIPTION	QTY.
1	11432	1.75 GPM FLOW REGULATOR	1
2	4-593/00	ASSY, SHOWER TRIM, SINGLE HANDLE, SQUARE, JOLIE	1
2.1	10958/00	PLATE, SHOWER TRIM MIX SERIES	1
1.2	3-603/00	ASSY, SQUARE HANDLE & BASE, CAGE DESIGN, JOLIE	1
2.3	11087	SLEEVE FOR PB-THERM PLATE	1
3	4-595/00	FLANGE, SHOWER ARM, MULTIFUNCTION SHOWER HEAD, SQUARE, JOLIE	1
3.1	P16008/00	SHOWER ARM (8 INCH)	1
3.2	11806/00	SQUARE BASE, BOTTOM, JOLIE	1
3.3	11804/00	SQAURE INSERT, HANDLE, BASE	1
3.4	11908/00	FLANGE COVER, SHOWER ARM, SQUARE, JOLIE	1
3.5	3-454/00	SHOWER HEAD MULTI. FUNC. CONTEMP.	1
3.6	90032	O-RING, 1-7/8"ID X 2"OD X 1/16"THK, AS-568-032	1
3.7	92434	SCREW, SS PHILLIPS FLAT HEAD W/ UNDERCUT 6-32 X 7/16"	4
3.8	90117	O-RING, 7/8"ID X 33/32"THK., AS-568-117	1

ALL	A	UPDATE TEMPLATE/ TRIM PLATE, ADD CALL OUTS & FLOW RESTRICTOR	3/31/2020	AMM
ZONE	REV.	DESCRIPTION	DATE	APPROVED
REVISIONS				

1261 LOGAN AVENUE  
COSTA MESA, CALIFORNIA 92626  
PHONE: 714.361.4800  
FAX: 714.617.3120

**PHYLIRICH**<sup>®</sup>  
Defining Luxury Since 1959

**PROPRIETARY AND CONFIDENTIAL**  
THE INFORMATION CONTAINED IN THIS DRAWING IS THE SOLE PROPERTY OF PHYLIRICH. ANY REPRODUCTION IN PART OR AS A WHOLE WITHOUT THE WRITTEN PERMISSION OF PHYLIRICH IS PROHIBITED.  
**DO NOT SCALE DRAWING**

ASSY, PRESSURE BALANCE SHOWER SET,  
SQUARE, JOLIE

SIZE <b>A</b>	ASM/PRT NO. 222-22/00	REV A
SCALE: 1:4.25	WEIGHT: lbs.	SHEET 1 OF 2