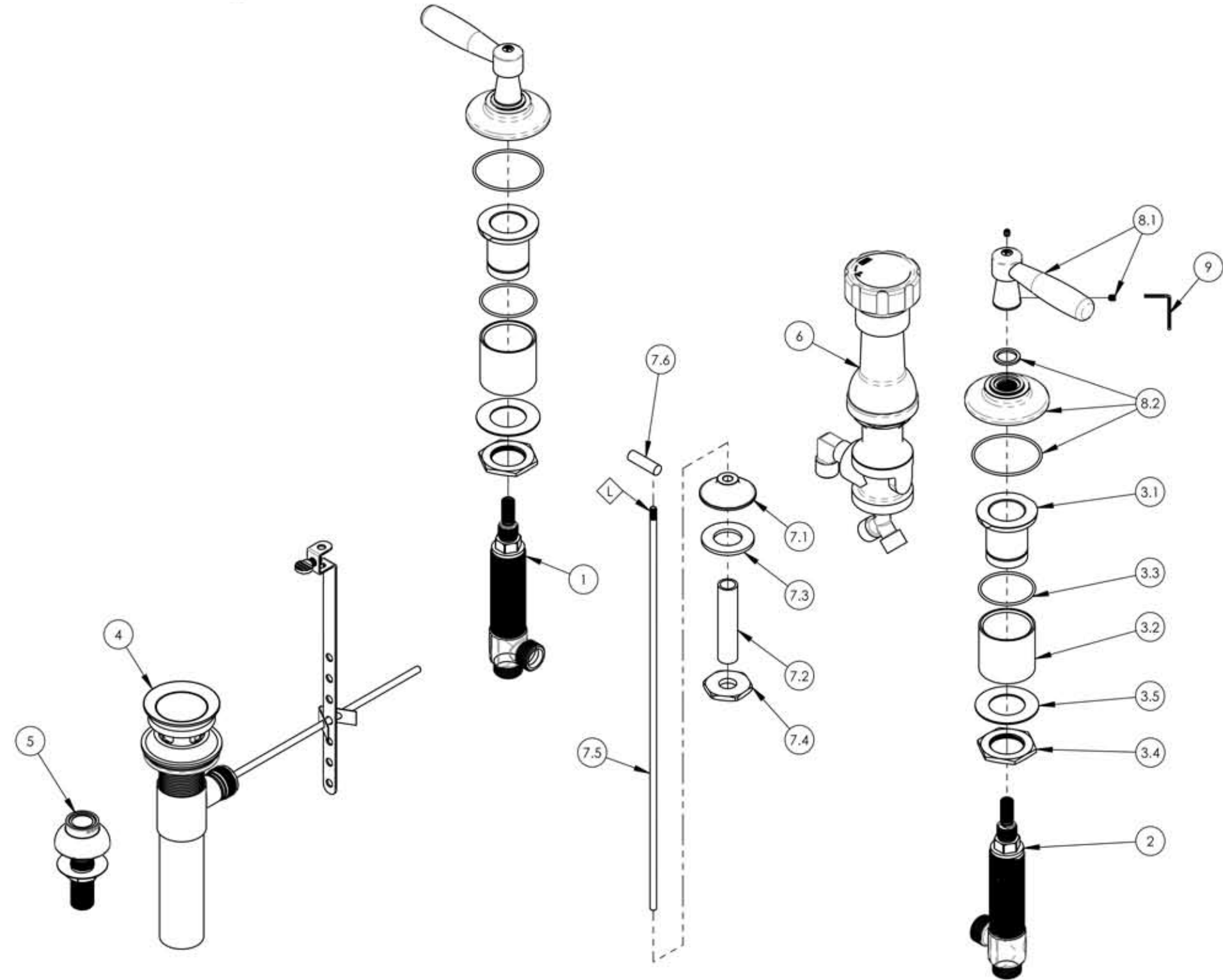


NOTE(S):
 1. PART NUMBER, "00" DENOTES PART SHALL HAVE FINISH.
 2. APPLY NSF COMPLIANT LOCTITE TO THREADED AREA.



ITEM NO.	PART NUMBER	DESCRIPTION	QTY.
1	1-149	WIDESPREAD VALVE LAV 1&PT, HOT, ONLY	1
2	1-150	WIDESPREAD VALVE LAV 1&PT, COLD, ONLY	1
3	2-092	RECESSED MOUNTING KIT FOR WIDESPREAD	2
3.1	10998	SLEEVE MOUNT, WIDESPREAD	1
3.2	92180	EXTENSION SLEEVE, WIDESPREAD	1
3.3	90029	O-RING, 1-5/8"ID X 1-3/4"OD X 1/16"THK, AS-568-029	1
3.4	92251	HEX NUT, 1"-20 THREAD	1
3.5	92252	WASHER, 1-1/32" ID 1-13/16" OD	1
4	3-046/00	POP-UP DRAIN ASSEMBLY (2-101, 2-102, & 2-246)	1
5	3-085/00	ASSY, BIDET SPRAYER	1
6	3-160/00	BIDET DIVERTER, COMPLETE	1
7	3-192/00	POP-UP ROD BIDET, BASIC	1
7.1	P09007/00	K4160 POP UP GUIDE	1
7.2	P32010	9/16-20 x 56 NIPPLE FOR COMPRESSION STEM	1
7.3	P35026	3/4" SAE FLAT WASHER	1
7.4	P09006	SPECIAL HEX F/BIDET SPRAYER	1
7.5	10719/00	POP-UP ROD, 10-24, 14" LONG	1
7.6	P04019/00	POP-UP, BASIC, W/ 10-24 THREAD	1
8	3-615/00	HANDLE LEVER W/ BASE & HARDWARE, WORKS	2
8.1	3-303/00	HANDLE LEVER W/ HARDWARE, WORKS	1
8.2	3-299/00	ESCUTCHEON BASE FOR HANDLE, WORKS	1
9	P39001	HEX KEY 5/64, FOR 8-32 SET SCREW	1

ZONE	REV.	DESCRIPTION	DATE	APPROVED
REVISIONS				
PHYLIRICH Defining Luxury Since 1959				

1261 LOGAN AVENUE
 COSTA MESA, CALIFORNIA 92626
 PHONE: 714.361.4800
 FAX: 714.617.3120

PROPRIETARY AND CONFIDENTIAL
 THE INFORMATION CONTAINED IN THIS DRAWING IS THE SOLE PROPERTY OF PHYLIRICH. ANY REPRODUCTION IN PART OR AS A WHOLE WITHOUT THE WRITTEN PERMISSION OF PHYLIRICH IS PROHIBITED.

INTERPRET GEOMETRIC DIMENSIONING & TOLERANCING IN ACCORDANCE WITH ASME Y14.5-2009 & ASME Y14.41-2003 STANDARDS, UNLESS OTHERWISE SPECIFIED. DIMENSIONS ARE IN INCHES. TOLERANCES ARE:			
	FRACTIONS	DECIMALS	ANGULAR
	±1/16	X.X: ±.1 X.XX: ±.01 X.XXX: ±.005	±2°
NEXT ASSY	USED ON	NAME	DATE
APPLICATION		AMM	1/22/2020
MATERIAL		CHECKED	
FINISH			

FOUR HOLE BIDET SET, LEVER, WORKS		
SIZE	ASM/PRT NO.	REV
B	220-61/00	
SCALE: 1:3.5	WEIGHT: lbs.	SHEET 1 OF 2

DO NOT SCALE DRAWING