

5

4

3

2

1

E

E

D

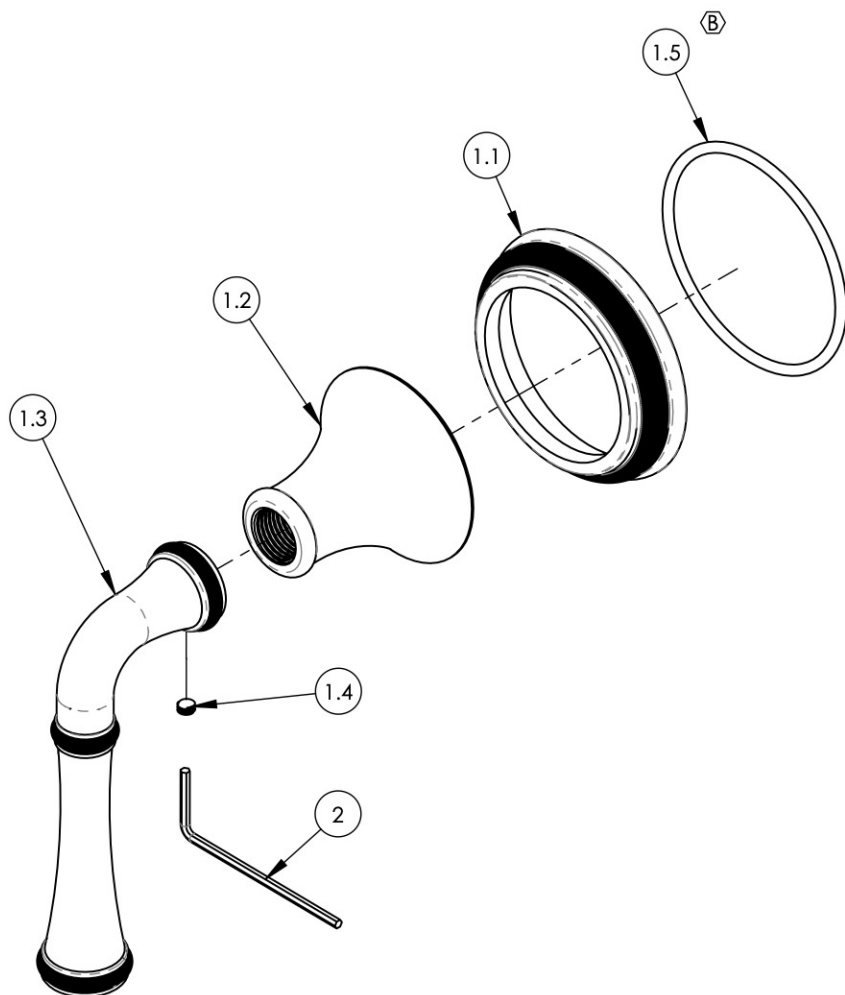
D

C

C

B

B



ITEM NO.	PART NUMBER	DESCRIPTION	QTY.
1	3-317/00	LEVER HANDLE, COINED SERIES	1
1.1	10978/00	ESCUTCHEON HANDLE BASE COINED, 3RING, COINED SERIES	1
1.2	10972/00	HUB, TRANSITIONAL 3RING	1
1.3	10977/00	HANDLE, STRAIGHT LEVER COINED, 3RING	1
1.4	92163	SET SCREW, CONE PT 8-32 X 1/8"L	1
1.5	90138	O-RING, 2 1/8"ID X 3/32"THK., AS-568-138	1
2	P39001	HEX KEY 5/64, FOR 8-32 SET SCREW	1

E3	B	UPDATE TEMPLATE, ADD O-RING, SEPARATE HEX KEY	4/9/2020	AMM
ZONE	REV.	DESCRIPTION	DATE	APPROVED
REVISIONS				

1261 LOGAN AVENUE
COSTA MESA, CALIFORNIA 92626
PHONE: 714.361.4800
FAX: 714.617.3120

PHYLIRICH[®]
Defining Luxury Since 1959

PROPRIETARY AND CONFIDENTIAL

THE INFORMATION CONTAINED IN THIS DRAWING IS THE SOLE PROPERTY OF PHYLIRICH. ANY REPRODUCTION IN PART OR AS A WHOLE WITHOUT THE WRITTEN PERMISSION OF PHYLIRICH IS PROHIBITED.

-	-	INTERPRET GEOMETRIC DIMENSIONING & TOLERANCING IN ACCORDANCE WITH ASME Y14.5-2009 & ASME Y14.41-2003 STANDARDS, UNLESS OTHERWISE SPECIFIED. DIMENSIONS ARE IN INCHES. TOLERANCES ARE:		
NEXT ASSY	USED ON	FRACTIONS ±1/16"	DECIMALS X.X: ±.1 X.XX: ±.01 X.XXX: ±.005	ANGULAR ±2°
APPLICATION		MATERIAL	NAME	DATE
FINISH		DRAWN	CA	12/16/2013
DO NOT SCALE DRAWING		CHECKED		

VOLUME CONTROL / DIV. TRIM, LEVER HANDLE, COINED SERIES

SIZE **A** ASM/PRT NO. **208-35/00** REV **B**

SCALE: 1:1.75 WEIGHT: lbs. SHEET 1 OF 2

5

4

3

2

1

A

A