

5

4

3

2

1

E

E

D

D

C

C

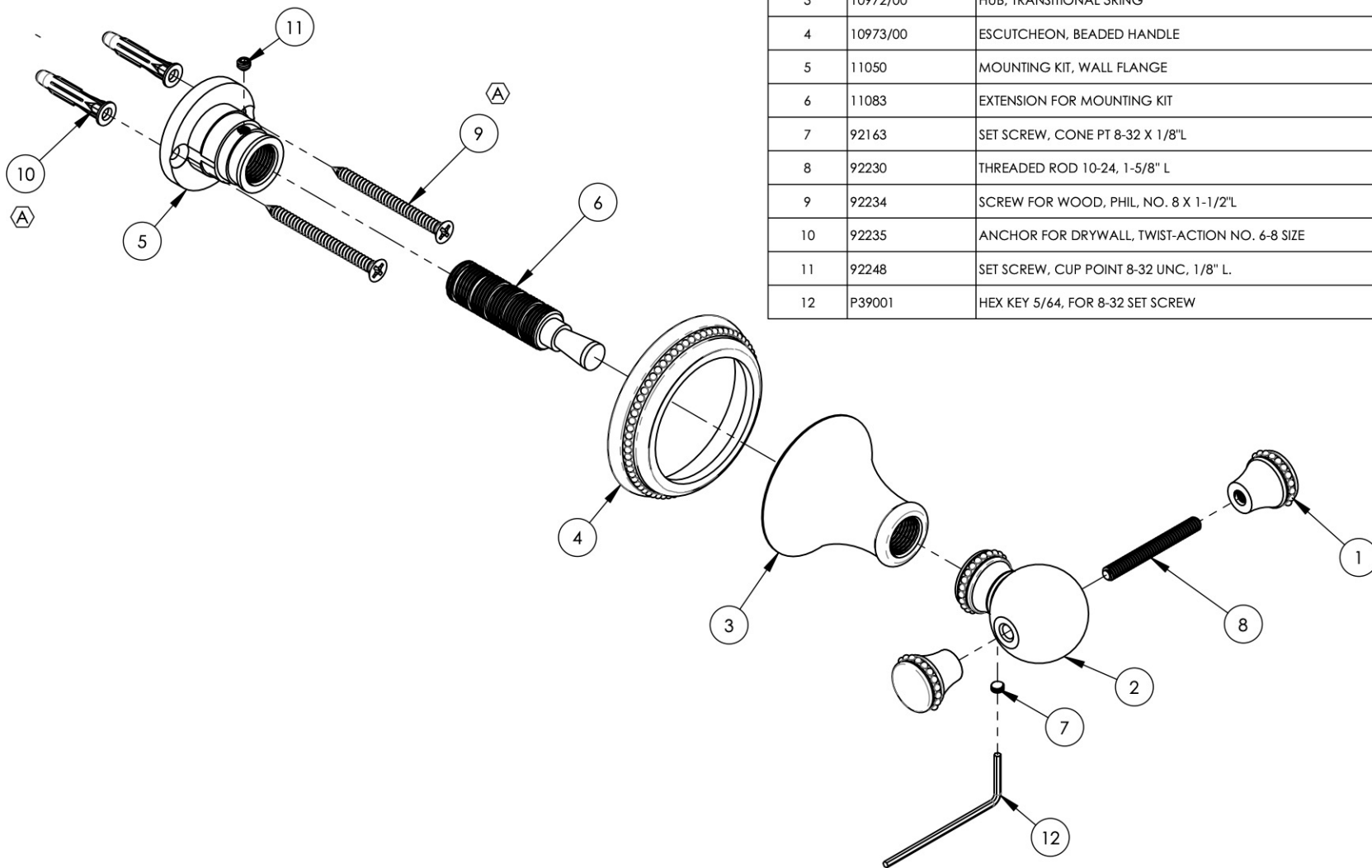
B

B

A

A

ITEM NO.	PART NUMBER	DESCRIPTION	QTY.
1	10531/00	ROBE HOOK FINIAL, BEADED SERIES	2
2	10532/00	DOUBLE HOOK POST, BEADED SERIES	1
3	10972/00	HUB, TRANSITIONAL 3RING	1
4	10973/00	ESCUTCHEON, BEADED HANDLE	1
5	11050	MOUNTING KIT, WALL FLANGE	1
6	11083	EXTENSION FOR MOUNTING KIT	1
7	92163	SET SCREW, CONE PT 8-32 X 1/8" L	1
8	92230	THREADED ROD 10-24, 1-5/8" L	1
9	92234	SCREW FOR WOOD, PHIL. NO. 8 X 1-1/2" L	2
10	92235	ANCHOR FOR DRYWALL, TWIST-ACTION NO. 6-8 SIZE	2
11	92248	SET SCREW, CUP POINT 8-32 UNC, 1/8" L.	1
12	P39001	HEX KEY 5/64, FOR 8-32 SET SCREW	1



ALL	REV.	DESCRIPTION	DATE	APPROVED
A		UPDATE TEMPLATE, REMOVE MOUNTING SUBASSY, UPDATE MOUNT SCREWS/ANCHORS & QTY	9/25/2020	AMM
REVISIONS				

1261 LOGAN AVENUE  
COSTA MESA, CALIFORNIA 92626  
PHONE: 714.361.4800  
FAX: 714.617.3120

**PHYLIRICH**<sup>®</sup>  
Defining Luxury Since 1959

**PROPRIETARY AND CONFIDENTIAL**

THE INFORMATION CONTAINED IN THIS DRAWING IS THE SOLE PROPERTY OF PHYLIRICH. ANY REPRODUCTION IN PART OR AS A WHOLE WITHOUT THE WRITTEN PERMISSION OF PHYLIRICH IS PROHIBITED.

-	-	INTERPRET GEOMETRIC DIMENSIONING & TOLERANCING IN ACCORDANCE WITH ASME Y14.5-2009 & ASME Y14.41-2003 STANDARDS, UNLESS OTHERWISE SPECIFIED. DIMENSIONS ARE IN INCHES. TOLERANCES ARE:		
NEXT ASSY	USED ON	FRACTIONS ±1/16"	DECIMALS X.X: ±.1 X.XX: ±.01 X.XXX: ±.005	ANGULAR ±2°
APPLICATION		MATERIAL	NAME	DATE
FINISH		DRAWN	LLO	10/2/2015
<b>DO NOT SCALE DRAWING</b>		CHECKED	GRE	

**ROBE HOOK, DOUBLE POST, BEADED SERIES**

SIZE	ASM/PRT NO.	REV
<b>A</b>	207-77/00	<b>A</b>
SCALE: 1:2	WEIGHT: lbs.	SHEET 1 OF 2

5

4

3

2

1