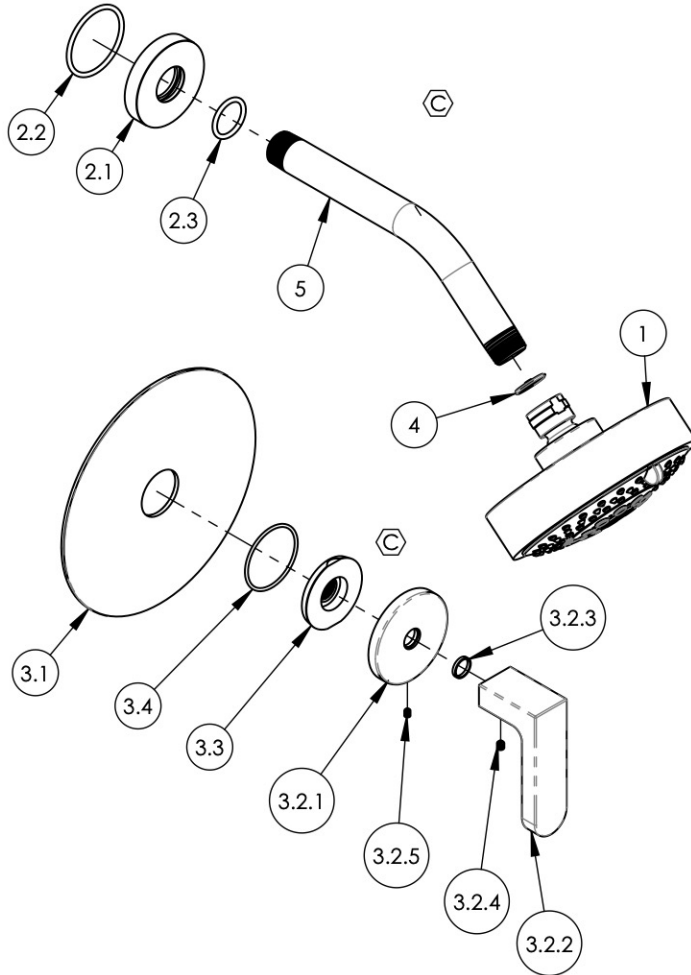
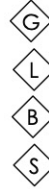


- NOTE(S):
- PART NUMBER, "/00" DENOTES PART SHALL HAVE FINISH.
  - APPLY NSF COMPLIANT GREASE TO ANY O-RING, SEALING JOINTS, AND/OR PIVOTAL POINTS.
  - APPLY NSF COMPLIANT LOCTITE TO THREADED AREA.
  - APPLY NSF COMPLIANT REMOVABLE (BLUE) LOCTITE TO THREADED AREA.
  - SILVER SOLDER JOINTS SHALL BE FULLY WETTED VIA CAPILLARY ACTION AND COMPLETELY NON-POROUS.
  - FOR DEEPEER ESCUTCHEON:
    - 3-589/00
    - 92401



ITEM NO.	PART NUMBER	DESCRIPTION	QTY.
1	3-454/00	SHOWER HEAD MULTI. FUNC. CONTEMP.	1
2	3-700/00	ESCUTCHEON FLANGE, SHOWER ARM, CONTEMPORARY, ROUND	1
2.1	P16019/00	BASE SHOWER FLANGE, BASIC SERIES	1
2.2	90129	O-RING, 1-9/16"ID X 3/32"THK., AS-568-129	1
2.3	90117	O-RING, 7/8"ID X 33/32"THK., AS-568-117	1
3	4-571/00	ASSY, SINGLE HANDLE TRIM, LEVER, ROND	1
3.1	10443/00	TRIM PLATE 6" ROUND, BASIC II	1
3.2	3-585/00	ASSY, LEVER HANDLE, ROND	1
3.2.1	11749/00	ESCUTCHEON, HANDLE, ROND	1
3.2.2	11752/00	HANDLE, LEVER, ROND	1
3.2.3	92176	WEAR WASHER	1
3.2.4	92008	SET SCREW, CUP POINT 8-32, 3/16" L.	1
3.2.5	92005	SET SCREW, CUP PT 6-32 UNC THREAD 3/16" L	1
3.3	11003	SLEEVE MOUNT, WALL MT WIDESPREAD	1
3.4	90029	O-RING, 1-5/8"ID X 1-3/4"OD X 1/16"THK., AS-568-029	1
4	11432	1.75 GPM FLOW REGULATOR	1
5	P16008/00	SHOWER ARM (8 INCH)	1

D4, B4	C	REMOVE SHOWER HEAD SUB-ASSY, UPDATE SLEEVE MOUNT & HANDLE ASSY, ADD NOTE	2/16/2021	AMM
ZONE	REV.	DESCRIPTION	DATE	APPROVED
REVISIONS				

1261 LOGAN AVENUE  
COSTA MESA, CALIFORNIA 92626  
PHONE: 714.361.4800  
FAX: 714.617.3120

**PHYLIRICH**<sup>®</sup>  
Defining Luxury Since 1959

**PROPRIETARY AND CONFIDENTIAL**  
THE INFORMATION CONTAINED IN THIS DRAWING IS THE SOLE PROPERTY OF PHYLIRICH. ANY REPRODUCTION IN PART OR AS A WHOLE WITHOUT THE WRITTEN PERMISSION OF PHYLIRICH IS PROHIBITED.  
**DO NOT SCALE DRAWING**

ASSY, LEVER HANDLE, PRESSURE  
BALANCE, SHOWER SET, ROND

SIZE <b>A</b>	ASM/PRT NO. 183-22/00	REV C
SCALE: 1:4.25	WEIGHT: lbs.	SHEET 1 OF 2