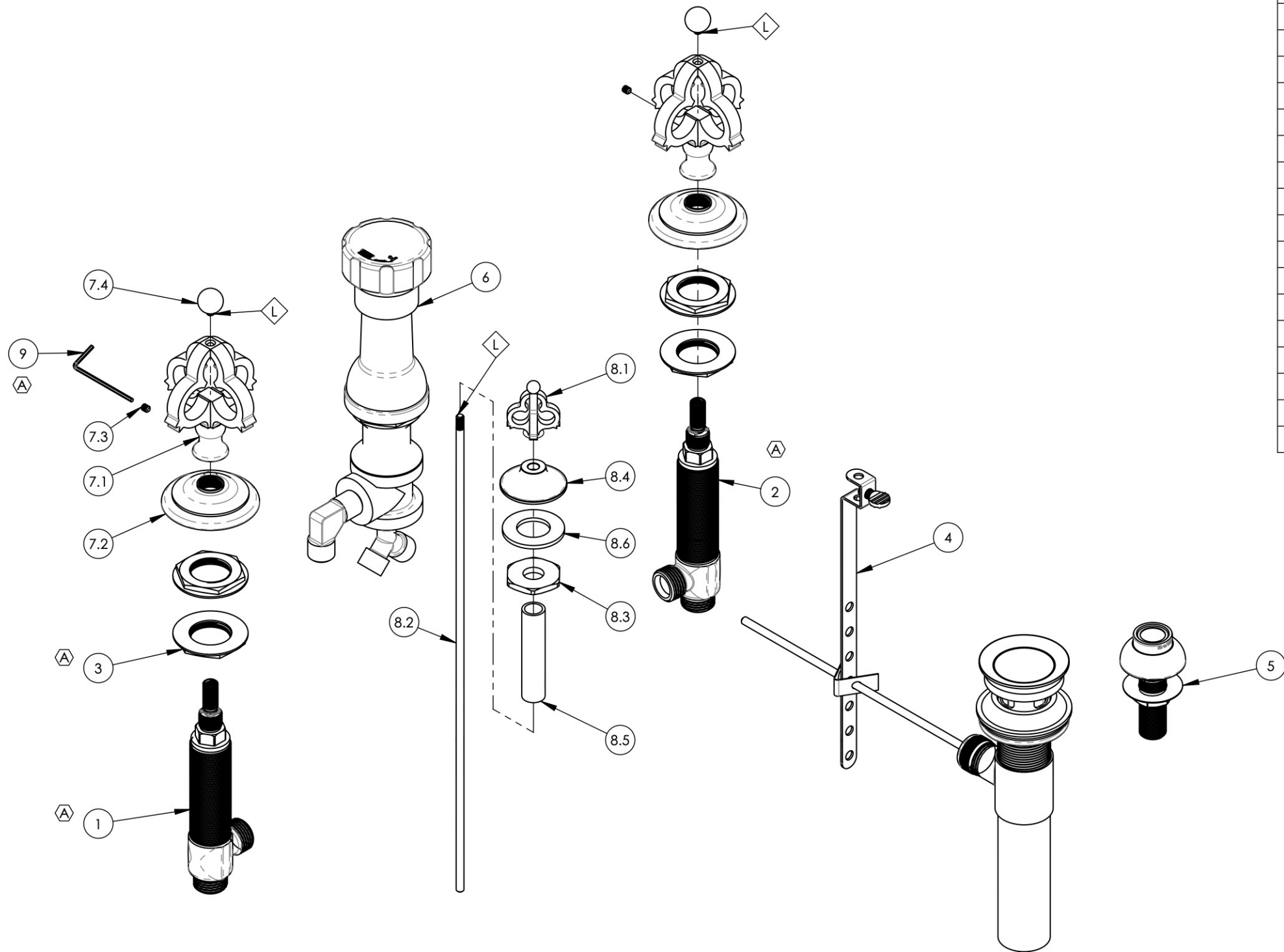


NOTE(S):  
 1. APPLY NSF COMPLIANT LOCTITE TO THREADED AREA. 

ITEM NO.	PART NUMBER	DESCRIPTION	QTY.
1	1-149	WIDESPREAD VALVE LAV 16PT, HOT, ONLY	1
2	1-150	WIDESPREAD VALVE LAV 16PT, COLD, ONLY	1
3	2-203	MOUNTING NUT KIT, WIDESPREAD LAV	4
4	3-046/00	POP-UP DRAIN ASSEMBLY (2-101, 2-102, & 2-246)	1
5	3-085/00	ASSY, BIDET SPRAYER	1
6	3-160/00	BIDET DIVERTER, COMPLETE	1
7	3-340/00	ASSY, HANDLE & ESCUTCHEON COURONNE SERIES	2
7.1	2-038/00	ASSY, HANDLE & ESCUTCHEON COURONNE SERIES	1
7.2	11175/00	ESCUTCHEON, COURONNE SERIES	1
7.3	92008	SET SCREW, CUP POINT 8-32, 3/16" L.	1
7.4	11160/00	FINIAL BALL, TOP CROWN	1
8	3-423/00	ASSY, BIDET POP-UP ROD, COURONNE	1
8.1	2-039/00	ASSY, POP-UP COURONNE SERIES	1
8.2	10719/00	POP-UP ROD, 10-24, 14" LONG	1
8.3	P09006	SPECIAL HEX F/BIDET SPRAYER	1
8.4	P09007/00	K4160 POP UP GUIDE	1
8.5	P32010	9/16-20 x 56 NIPPLE FOR COMPRESSION STEM	1
8.6	P35026	3/4" SAE FLAT WASHER	1
9	P39001	HEX KEY 5/64, FOR 8-32 SET SCREW	1



ALL	A	UPDATE TEMPLATE, DWG NAME, VALVES, ADD CALL OUTS/ HEX KEY	7/30/2020	AMM
ZONE	REV.	DESCRIPTION	DATE	APPROVED
REVISIONS				
		1261 LOGAN AVENUE COSTA MESA, CALIFORNIA 92626 PHONE: 714.361.4800 FAX: 714.617.3120	<b>PHYLIRICH</b> Defining Luxury Since 1959	
		<b>PROPRIETARY AND CONFIDENTIAL</b> THE INFORMATION CONTAINED IN THIS DRAWING IS THE SOLE PROPERTY OF PHYLIRICH. ANY REPRODUCTION IN PART OR AS A WHOLE WITHOUT THE WRITTEN PERMISSION OF PHYLIRICH IS PROHIBITED.		

NEXT ASSY	USED ON	FRACTIONS ±1/16"	DECIMALS X.X: ±.1 X.XX: ±.01 X.XXX: ±.005	ANGULAR ±2°
APPLICATION		MATERIAL	NAME	DATE
FINISH		DRAWN	LLO	10/21/2015
DO NOT SCALE DRAWING		CHECKED	GRE	

<b>BIDET SET, FOUR HOLE, CROSS HANDLES, COURONNE</b>		
SIZE <b>B</b>	ASM/PRT NO. 163-60/00	REV A
SCALE: 1:3	WEIGHT: lbs.	SHEET 1 OF 2