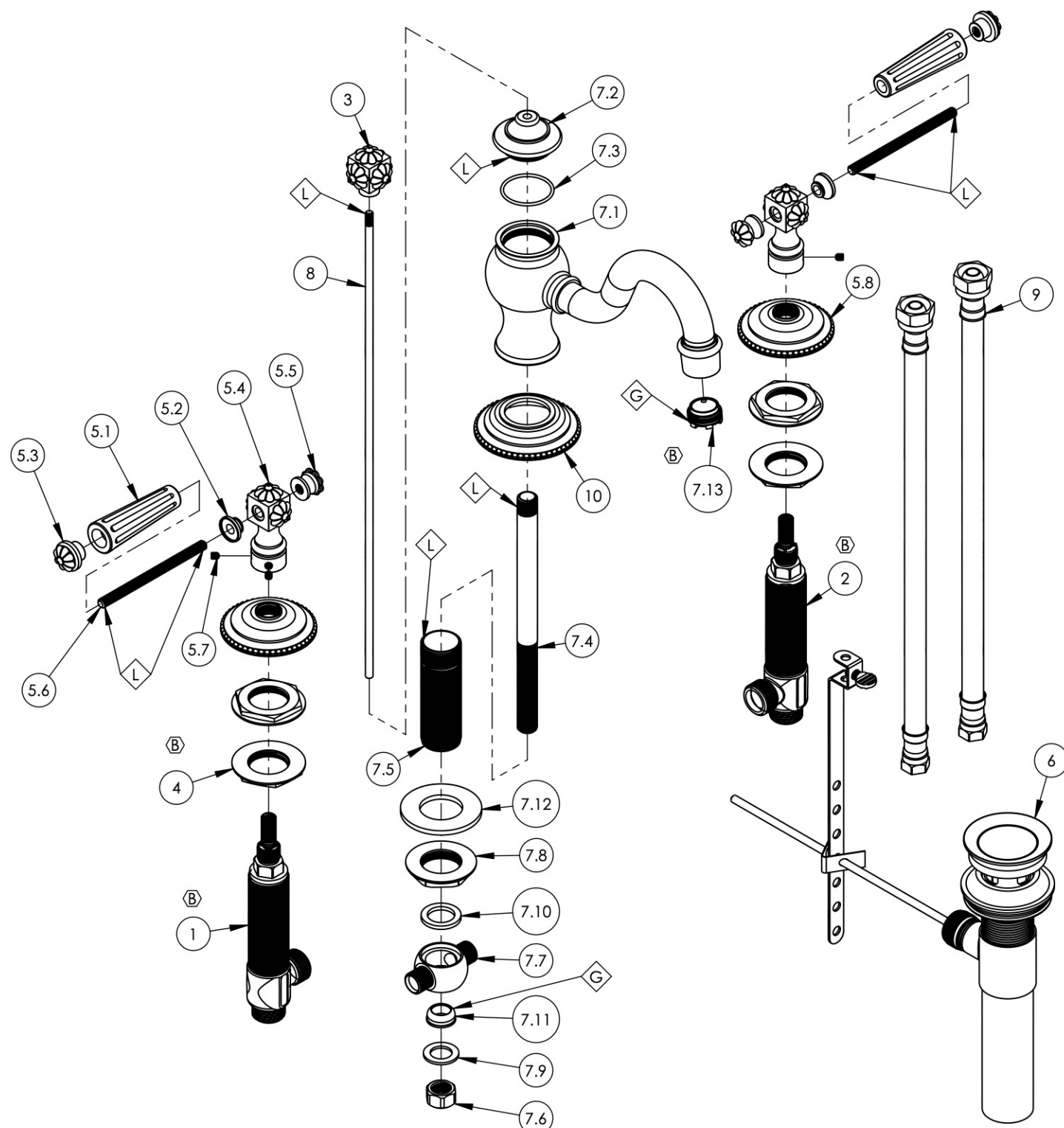


- NOTE(S):
1. APPLY NSF COMPLIANT GREASE TO ANY O-RING, SEALING JOINTS, AND/OR PIVOTAL POINTS.
 2. APPLY NSF COMPLIANT LOCTITE TO THREADED AREA.



ITEM NO.	PART NUMBER	DESCRIPTION	QTY.
1	1-149	WIDESPREAD VALVE LAV 16PT, HOT, ONLY	1
2	1-150	WIDESPREAD VALVE LAV 16PT, COLD, ONLY	1
3	2-115/00	SUB-ASSY. FINIAL POP-UP, MARVELLE SERIES	1
4	2-203	MOUNTING NUT KIT, WIDESPREAD LAV	4
5	3-030/00	HANDLE LEVER, MARVELLE SEIRES	2
5.1	10541/00	LEVER HANDLE INSERT, MARVELLE	1
5.2	11102/00	BASE HANDLE FOR LEVER HEX TRADITIONAL 500 SERIES	1
5.3	2-111/00	SUB-ASSY. END CAP FINIAL, MARVELLE	1
5.4	2-113/00	SUB-ASSY. LEVER TRASITION FINIAL, MARVELLE	1
5.5	2-112/00	SUB-ASSY. FINIAL EXTENSION BACK LEVER	1
5.6	10543	THREADED ROD, 1/4"-20 X 3"-5/8 L	1
5.7	92008	SET SCREW, CUP POINT 8-32, 3/16" L.	2
5.8	10540/00	ESCUTCHEON, MARVELLE SERIES	1
6	3-046/00	POP-UP DRAIN ASSEMBLY (2-101, 2-102, & 2-246)	1
7	3-341/00	ASSY. SPOUT, WIDESPREAD, COURONNE/MARVELLE	1
7.1	2-037/00	SUB-ASSY. SPOUT COURONNE/MARVELLE SERIES	1
7.2	11179/00	SPOUT CAP, COURONNE SERIES	1
7.3	90025	O-RING, 1-3/16"ID X 1/16"THK, AS-568-025	1
7.4	P33002	7" POP-UP GUIDE	1
7.5	P33008	LAV SPOUT NIPPLE	1
7.6	168B	NUT FOR 3-WAY TEE	1
7.7	2003NL	TEE VALVE FOR LAV WIDESPREAD	1
7.8	92037	NUT, FLANGED 1"-20 THREAD	1
7.9	28A	BRASS WASHER	1
7.10	427	FIBER WASHER, 0.983" x 0.680" x 0.100" THK	1
7.11	954A	CONE WASHER	1
7.12	P35317	S.S. WASHER O.D 2" I.D 1" 1/16	1
7.13	11429	AERATOR CACHE JUNIOR, 1.2GPM, M21.5X1.0, NEOPERL # 42.2260.450	1
8	10719/00	POP-UP ROD, 10-24, 14" LONG	1
9	10982	HOSE, 3/8" COMP. X 1/2" NPSM - 12"L	2
10	11180/00	ESCUTCHEON SPOUT, COURONNE SERIES	1

ALL	B	UPDATE TEMPLATE, ADD CALL OUTS, UPDATE AERATOR & VALVES	7/27/2020	AMM
ZONE	REV.	DESCRIPTION	DATE	APPROVED
REVISIONS				
1261 LOGAN AVENUE COSTA MESA, CALIFORNIA 92626 PHONE: 714.361.4800 FAX: 714.617.3120		PHYLIRICH Defining Luxury Since 1959		PROPRIETARY AND CONFIDENTIAL THE INFORMATION CONTAINED IN THIS DRAWING IS THE SOLE PROPERTY OF PHYLIRICH. ANY REPRODUCTION IN PART OR AS A WHOLE WITHOUT THE WRITTEN PERMISSION OF PHYLIRICH IS PROHIBITED.

INTERPRET GEOMETRIC DIMENSIONING & TOLERANCING IN ACCORDANCE WITH ASME Y14.5-2009 & ASME Y14.41-2003 STANDARDS. UNLESS OTHERWISE SPECIFIED, DIMENSIONS ARE IN INCHES. TOLERANCES ARE:		
FRACTIONS ±1/16"	DECIMALS X.X: ±.1 X.XX: ±.01 X.XXX: ±.005	ANGULAR ±2°
NEXT ASSY	USED ON	APPLICATION
MATERIAL	NAME	DATE
FINISH	DRAWN LLO	10/14/2015
DO NOT SCALE DRAWING	CHECKED GRE	

WIDESPREAD FAUCET, LEVER HANDLES, MARVELLE		
SIZE B	ASM/PRT NO. 162-02/00	REV B
SCALE: 1:6	WEIGHT: lbs.	SHEET 1 OF 2