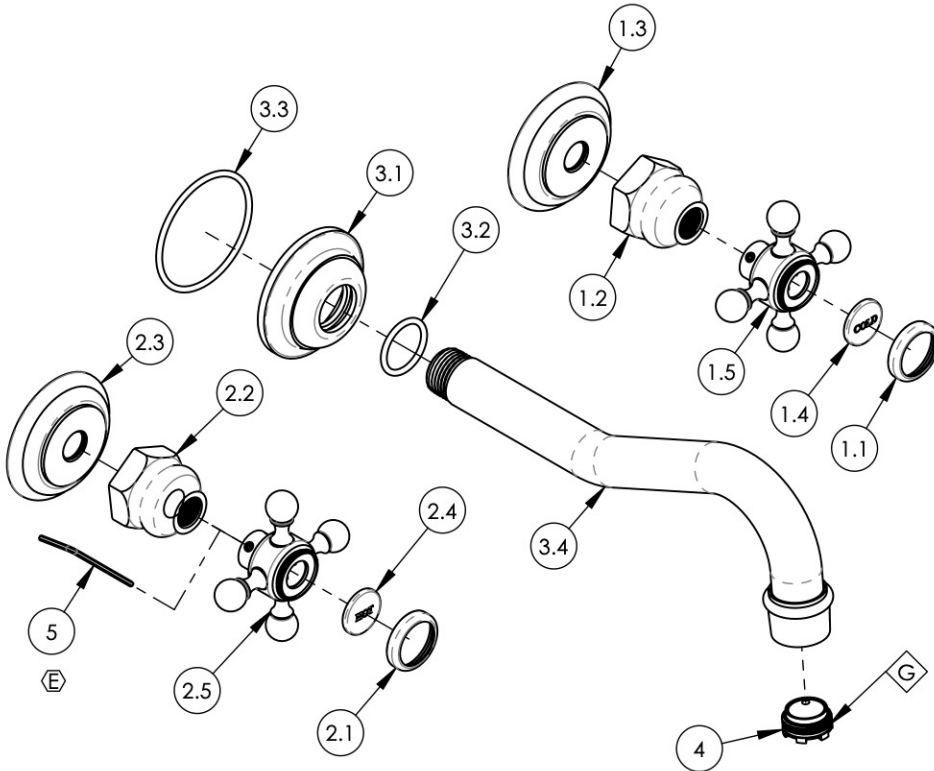


- NOTE(S):
 1. PART NUMBER, "/00" DENOTES PART SHALL HAVE FINISH.
 2. APPLY NSF COMPLIANT GREASE TO ANY O-RING, SEALING JOINTS, AND/OR PIVOTAL POINTS.
 3. APPLY NSF COMPLIANT LOCTITE TO THREADED AREA.
 4. APPLY NSF COMPLIANT REMOVABLE (BLUE) LOCTITE TO THREADED AREA.
 5. SILVER SOLDER JOINTS SHALL BE FULLY WETTED VIA CAPILLARY ACTION AND COMPLETELY NON-POROUS.



ITEM NO.	PART NUMBER	DESCRIPTION	QTY.
1	3-142C/00	CROSS HANDLE, WALL/SHOWER, 500 SERIES	1
1.1	10538/00	CAP RING FOR 500 SERIES BUTTON	1
1.2	10621/00	BASE HUB NUT	1
1.3	10618/00	ESCUTCHEON, TRADITIONAL 500	1
1.4	11098	PLASTIC BUTTON, COLD	1
1.5	2-180/00	SUB ASSY. CROSS HANDLE HUB	1
2	3-142H/00	CROSS HANDLE, WALL/SHOWER, 500 SERIES	1
2.1	10538/00	CAP RING FOR 500 SERIES BUTTON	1
2.2	10621/00	BASE HUB NUT	1
2.3	10618/00	ESCUTCHEON, TRADITIONAL 500	1
2.4	11099	PLASTIC BUTTON, HOT	1
2.5	2-180/00	SUB ASSY. CROSS HANDLE HUB	1
3	3-390/00	WALL SPOUT, HENRI SERIES	1
3.1	11158/00	FLANGE, WALL TUB	1
3.2	90118	O-RING, 7/8"ID X 1-1/16"OD X 3/32"THK, AS-568-118	1
3.3	90137	O-RING, 2-1/16"ID X 3/32"THK., AS-568-137	1
3.4	2-108/00	SUB. ASSY, WALL SPOUT	1
4	11429	AERATOR CACHE JR, 1.2GPM, M21.5X1.0, 42.2260.450	1
5	92021	HEX KEY 5/64, FOR 8-32 SET SCREW	1

ZONE	REV.	DESCRIPTION	DATE	APPROVED
B5	E	UPDATE HEX KEY PART #	4/20/2021	AMM
REVISIONS				

1261 LOGAN AVENUE
 COSTA MESA, CALIFORNIA 92626
 PHONE: 714.361.4800
 FAX: 714.617.3120

PHYLIRICH[®]
 Defining Luxury Since 1959

PROPRIETARY AND CONFIDENTIAL
 THE INFORMATION CONTAINED IN THIS DRAWING IS THE SOLE PROPERTY OF PHYLIRICH. ANY REPRODUCTION IN PART OR AS A WHOLE WITHOUT THE WRITTEN PERMISSION OF PHYLIRICH IS PROHIBITED.
DO NOT SCALE DRAWING

WALL LAVATORY SET, CROSS HANDLES, 8" SPOUT, HENRI

SIZE	ASM/PRT NO.	REV
A	161-11/00	E
SCALE: 1:3.25	WEIGHT: lbs.	SHEET 1 OF 2