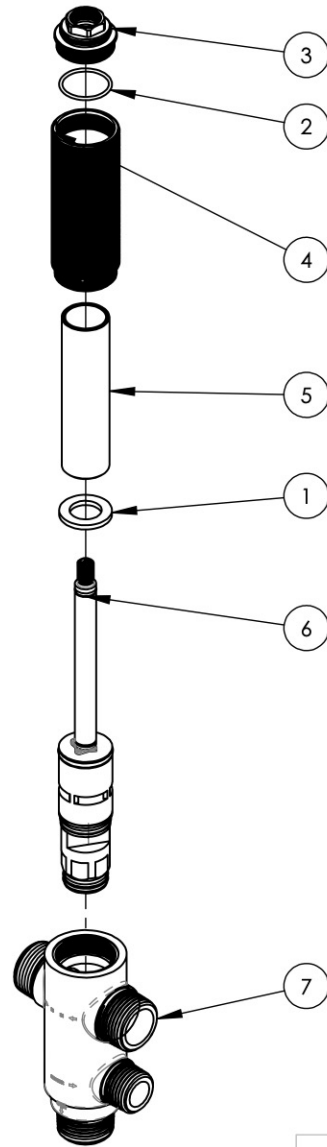


- NOTE(S):
 1. OVERALL DIMENSIONS PART IS AS FOLLOWS:
 A. DIAMETER / HEIGHT & WIDTH = \varnothing
 B. LENGTH =
2. UNLESS OTHERWISE SPECIFIED, REMOVE ALL SHARP EDGES AND BURRS: .005 - .015.
3. ANY / ALL DIMENSION CALLOUTS WITH \triangle SHALL BE CRITICAL DIMENSIONS.



ITEM NO.	PART NUMBER	DESCRIPTION	QTY.
1	90586	DECK DIVERTER, GASKET SEAL	1
2	90587	O RING, METRIC 21.5 X 1.5	1
3	11716	NUT, TOP OF DECK DIVERTER	1
4	11717	DECK DIVERTER, OUTER SLEEVE	1
5	11718	DECK DIVERTER, INNER SLEEVE	1
6	11719	DECK DIVERTER, DIVERTER CARTRIDGE	1
7	11720	DECK DIVERTER, FORGING BODY	1

A

B

C

D

E

ZONE	REV.	DESCRIPTION	DATE	APPROVED
------	------	-------------	------	----------

REVISIONS				
-----------	--	--	--	--

1261 LOGAN AVENUE COSTA MESA, CALIFORNIA 92626 PHONE: 714.361.4800 FAX: 714.617.3120		PROPRIETARY AND CONFIDENTIAL THE INFORMATION CONTAINED IN THIS DRAWING IS THE SOLE PROPERTY OF RSS MANUFACTURING. ANY REPRODUCTION IN PART OR AS A WHOLE WITHOUT THE WRITTEN PERMISSION OF RSS MANUFACTURING IS PROHIBITED.
---	--	---

-	-	INTERPRET GEOMETRIC DIMENSIONING & TOLERANCING IN ACCORDANCE WITH ASME Y14.5-2009 & ASME Y14.41-2003 STANDARDS, UNLESS OTHERWISE SPECIFIED. DIMENSIONS ARE IN INCHES. TOLERANCES ARE:		
			FRACTIONS	DECIMALS
			$\pm 1/64"$	X.X: $\pm .1$ X.XX: $\pm .01$ X.XXX: $\pm .005$
				ANGULAR
				$\pm .5^\circ$
			NAME	DATE
			DRAWN	AMM 12/14/2018
			DO NOT SCALE DRAWING	CHECKED

DECK DIVERTER VALVE ASSY, TWO FUNCTION			
SIZE	ASM/PRT NO.	REV	
A	1-081		
SCALE: 1:3.5	WEIGHT: lbs.	SHEET 1 OF 2	

5

4

3

2

1